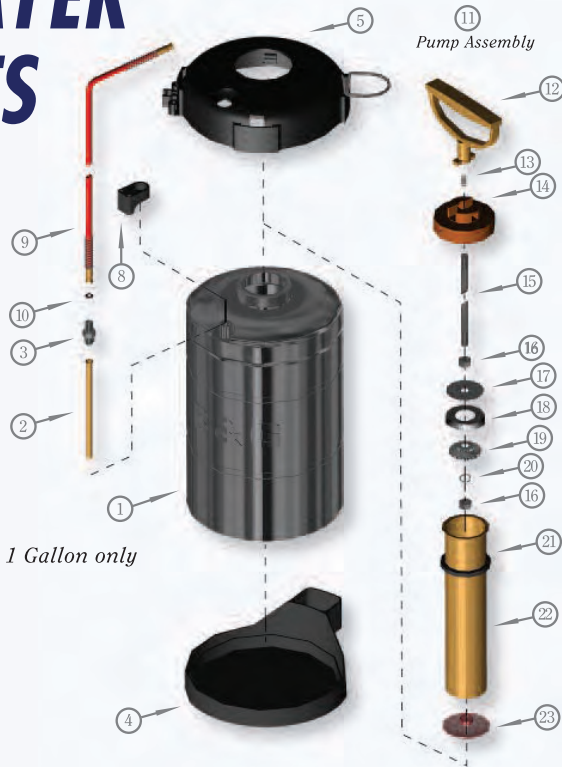


SPRAYER PARTS LIST



1 Gallon only



Item 47 Includes Items 48-51

Valve, Extenda-Ban Complete Assembly

ITEM #	PART #	ORDER #	DESCRIPTION
1	T-50	22024800	Tank (1/2 Gallon)
	T-100	22025000	Tank (1 Gallon)
	T-200	22025100	Tank (2 Gallon)
	T-300	22025200	Tank (3 Gallon)
	T-500	22025250	Tank (5 Liter)
2	HS-297	22025600	Tube, Siphon (1/2 Gallon)
	OS-297	22025700	Tube, Siphon (1 Gallon)
	TS-297	22025800	Tube, Siphon (2 Gallon)
	THS-297-01	22025901	Tube, Siphon (3 Gallon)
	FS-297	22025950	Tube, Siphon (5 Liter)
3	HA-298	22025300	Adapter, Hose
	TB-1	22049477	Bottom, Tank (1 Gallon Only)
4	TT-1	22049476	Top, Tank (1 Gallon Only)
8	5700-H	22049475	Holder, Tip (Not used with Item 5)
9	D-50	22030100	Hose, 4 ft., red
10	D-51-P	22030400	Washer, Hose
11	PH-265	22026900	Pump Assembly (1/2 Gallon)
	PO-265	22027000	Pump Assembly (1 Gallon)
	PF-265	22027125	Pump Assembly (2 Gallon & 5 Liter)
	PT-265	22027100	Pump Assembly (3 Gallon)
12	P-275	22029800	Handle, Pump
	P-276	22029900	Spring, Pump Lock
13	P-274	22029700	Cap, Pump
15	PH-273	22029400	Rod, Plunger (1/2 Gallon)
	PO-273	22029500	Rod, Plunger (1 Gallon)
	PF-273	22029650	Rod, Plunger (2 Gallon & 5 Liter)
	PT-273	22029600	Rod, Plunger (3 Gallon)
16	P-269-SS	22028250	Nut, Plunger
	P-272	22029200	Plate, Back
17	NP-277	22029000	Cup, Polypropylene
	NP-271	22028800	Cup, Leather
18	NP-270	22028600	Plate, Cup Spreader
19	P-269A	22028400	Washer, Lock
20	P-268	22028000	Gasket, Pump
21	PH-267	22027400	Tube, Pump (1/2 Gallon)
	PO-267	22027500	Tube, Pump (1 Gallon)
	PF-267	22027650	Tube, Pump (2 Gallon & 5 Liter)

ITEM #	PART #	ORDER #	DESCRIPTION
22	PT-267	22027600	Tube, Pump (3 Gallon)
23	PV-266	22027200	Valve, Check
24	120	22042101	Valve, Extenda-Ban 9" (less tip)
	220	22042203	Valve, Extenda-Ban 18" (less tip)
42	420	22042778	Valve, Extenda-Ban 24" (less tip)
	VB-147	22044450	Valve Body Kit
25	VT-140	22042800	Trigger, Valve Housing, Screw
26	PN-150-2	22042455	Nut, Packing
30	PN-150-1	22042454	(1999 - 2000) Nut, Packing
31	VP-151	22045099	Packing, Valve
32	PN-150	22044900	Nut, Packing (Prior to 1999)
34	AS-148	22044500	Adjusting Screw, Lock nut, Snap ring
36	SL-162	22046700	Nut, Safety Lock
37	MS-145-50	22043800	Strainer, 50 Mesh Support, Strainer
39	NG-146	22044200	Gasket, Nylon
40	SA-143	22043400	Housing, Strainer
	VC-152	22045300	Cable, Valve 9"
41	VC-153	22045400	Cable, Valve 18"
	VC-163	22045450	Cable, Valve 24"
42	VE-154	22045500	Extension, Brass 9"
	VE-155	22045600	Extension, Brass 18"
	VE-164	22045650	Extension, Brass 24"
	VE-154-SS	22045510	Extension, Stainless Steel 9"
VE-155-SS	22045610	Extension, Stainless Steel 18"	
VE-164-SS	22045710	Extension, Stainless Steel 24"	
43	VS-156	22045700	Spring, Seat Stem
44	SSL-157	22045900	Nut, Seat Stem
45	SS-158	22046100	Stem, Seat
46	SP-159	22046300	Gasket, Soft Seat
47	5850-CC	22049466	B&G 4 Way C&C Tip Assembly (Parts 48-51)
	5850	22049451	Tip Assembly (No C&C)
48	9751-M	22049300	Holder, B&G 4 Way C&C Tip
49	4190	22034700	Gasket, Viton®
50	5800-CC	22049467	Tip, B&G 4 Way C&C
	5800	22049452	Tip only (No C&C)
51	4596	22034500	Retainer, Tip
52	5700-B	22049200	Extension, Crack & Crevice

See a video on how to service and maintain your B&G @ www.bgequip.com

SPRAYER PARTS & ACCESSORIES

Tip Assemblies

DESCRIPTION	ORDER #	MODEL #
B&G 4 Way C&C Tip Assembly (complete)	22049466	5850-CC
B&G 4 Way Tip Assembly (complete)	22049451	5850
Pin-To-Cone (other sizes available)	22036600	5500-Y-2
Adjustable Pin-to-Cone	22083602	AV-210

Single Tips – A wide range available on request.

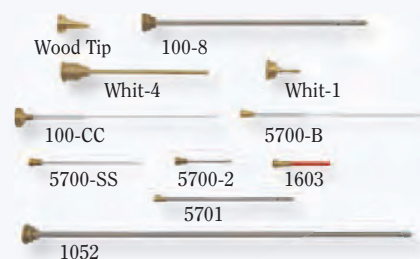
Nozzles

DESCRIPTION	ORDER #	MODEL #
B&G 4 Way C&C Tip	22049467	5800-CC
B&G 4 Way Tip Only (no C&C orifice)	22049452	5800
Adjustable Tip Assembly	22035200	5900



Straws & Needles

DESCRIPTION	ORDER #	MODEL #
Plastic C&C Straw (fits directly on a gun with a 1325 Tip Cap)	22049500	100-CC
Ban-Drip Fan Tip (3/16" dia., 12" long) (requires 1325 Cap)	22039677	1052
1" plastic C&C Straw (fits in B&G 4 Way C&C tip)	22071703	1603
6" plastic C&C Straw (fits in B&G 4 Way C&C tip)	22049200	5700-B
3.5" Stainless Steel Injector Needle (fits in B&G 4 Way C&C tip)	22049400	5700-SS
2" Stainless Steel Void Tip (fits in B&G 4 Way C&C tip)	22071785	5700-2
4" Stainless Steel 4 Way Void Tip (fits in B&G 4 Way C&C tip)	22049425	5701
8" Mulch/Ant Mound Probe (fits any gun/ext. with 1325 Tip Cap)	22071684	100-8
1" Wood Injection Tip (requires 1325)	22071824	Whit-1
4" Wood Injection Tip (requires 1325)	22071827	Whit-4
1/2" Wood Injection Tip "better wood seal design" (requires 1325)	24040077	WoodTip



Gasket Kits

Designed for rebuilding sprayers. Includes the most commonly needed parts when repairing a sprayer.



DESCRIPTION	ORDER #	MODEL #
Sprayers with XR Valve	22049600	GT-100
Sprayers with Extenda-Ban Valve	22050100	GD-124

Sprayer Tune-Up Kit

Keeps your sprayer in perfect working order. Apply pesticides that meet labeling requirements without over-application. Includes instructional DVD on how to clean and repair your sprayer. Priced at a savings of over 20% compared to purchasing individual parts.

Kit includes GD-124 Repair Kit, DVD on maintaining and cleaning your sprayer, Cleaning kit, New 4 Way Tip, and Repair & Rebuild Manual



DESCRIPTION	MODEL #
Kit with 4 Way Crack & Crevice Tip	22049630
Kit with 4 Way Tip	22049631

First Aid Kits

Same as the Gasket Kit but includes higher volumes of all parts. Good for conducting Care & Maintenance classes for an entire office.



DESCRIPTION	ORDER #	MODEL #
Sprayers with Extenda-Ban Valve	22050400	FA-600-D
Sprayers with Ban-Drip Valve	22050300	FA-600-B
Technician Emergency Kit	23088125	TE-125
Office Emergency Kit	23088126	OE-126

Technician Emergency Kit

Commonly needed parts for most B&G equipment. Includes easy to understand drawings of parts, repair hints, and refill quantities. Works in conjunction with the Office Emergency Kit as a refilling station.



Office Emergency Kit

A great inventory system for B&G repair parts. Contains more quantities of those parts in the Technician Emergency Kit and also has many less common parts not included in the Technician Emergency Kit. Recommended for office supply rooms. Good for offices with 3 to 8 technicians. Includes easy to understand drawings of parts, repair hints, and refill quantities.