



## THE WORLD'S LEADING RANGE OF **INSECT LIGHT TRAPS**

Innovative technology and superior fly catch for **more hygienic environments**

# Genus<sup>®</sup>



**POWERFUL FLY CONTROL**  
SUPERIOR FOOD HYGIENE

 **Brandenburg**  
CREATING BETTER



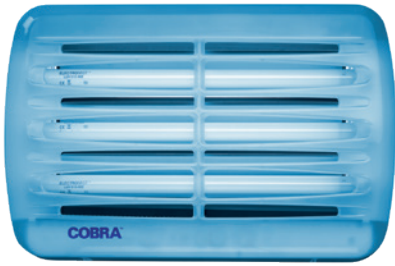
2.4  
TIMES MORE  
UVA OUTPUT

+ ALL  
ROUND  
COVERAGE

= 186%  
MORE FLIES  
CAUGHT

= & FASTER REMOVAL  
OF FOODBORNE PATHOGENS

## Genus® | COBRA



Using patented Translucent Technology™, Genus® Cobra produces faster flying insect catch when compared against other non-translucent fly traps of a similar power.

- Translucent Technology™ catches more flies, faster
- Quick release front cover for fast & easy servicing
- 45 W unit for quick catch (3 x 15 W lamps)
- Low running costs and reduced CO<sub>2</sub> emissions

<b>Product:</b> Genus® Cobra™ Translucent 3 x 15 W lamps standard Genus® Cobra™ Translucent 3 x 15 W lamps sleeved	<b>Order Code:</b> CT315-XXX-02 CT315-XXX-025
<b>Lamps:</b> Electrosect 15 W lamp standard, 25 pack Electrosect 15 W lamp sleeved, 25 pack	LUV015-002-25 LUV015-003-25
<b>Glue board:</b> Genus® universal glue board, 20 packs of 15	CBP1300-15-20-M

## Genus® | ORBIT JET



The Genus® Orbit features Translucent Technology™ for premium performance in flying insect control with low running costs and ease of servicing. It is also IP65 rated for wet and wash-down areas.

- 2.4 x more UVA output and 186% more fly catch\*  
\*Compared to conventional non translucent ILTs of a similar power
- Translucent Technology™ increases UVA dispersal and fly catch
- 45 W unit for quick catch (3 x 15 W lamps)
- Fully hinged front door and quick release cover for easy servicing
- Dust proof and protects from water penetration in all directions
- Unit can remain switched on while washing

<b>Product:</b> Orbit Jet Proof 3 x 15 W lamps sleeved	<b>Order Code:</b> ORB45-2TX651-XXX
<b>Lamps:</b> Electrosect 15 W lamp standard, 25 pack Electrosect 15 W lamp sleeved, 25 pack	LUV015-002-25 LUV015-003-25
<b>Glue board:</b> Genus® universal glue board, 20 packs of 15	CBP1300-15-20-M

## Genus® | ILT30

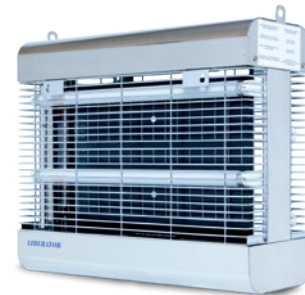


A new generation insect light trap designed for reduced energy consumption and increased attraction levels to remove flying insect pests faster.

- Horizontal, vertical or corner wall mounting and free standing options offers flexibility in location
- 2 x 15 Watt lamps and integral UV reflectors for increased output and more powerful attraction levels
- Grid-marked glue board, large catch area, HACCP compliance
- Easy-open cover for fast, safe, both-hands free servicing

<b>Product:</b> Genus® ILT30 2 x 15 W lamps, standard Genus® ILT30 2 x 15 W lamps, sleeved	<b>Order Code:</b> ILT30-1S12011XXX ILT30-2S12011XXX
<b>Lamps:</b> Electrosect 15 W lamp standard, 25 pack Electrosect 15 W lamp sleeved, 25 pack	LUV015-002-25 LUV015-003-25
<b>Glue board:</b> Genus® universal glue board, 20 packs of 15	CBP1300-15-20-M

## Genus® | LIBERATOR



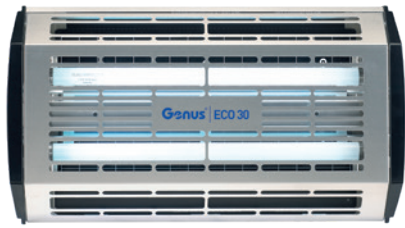
Designed for hardwearing reliability in the toughest environments without compromising performance. Easy servicing capability minimises downtime.

- Tool-free, fast and easy maintenance & servicing
- Wall mounted or suspended location
- Grid-marked glue board, large catch area, HACCP compliance
- 60W unit for quick catch (4 x 15 W lamps)

<b>Product:</b> Genus® Liberator Stainless Catcher, 4 x 15 W lamps sleeved	<b>Order Code:</b> LSC415S-1-01
<b>Lamps:</b> Electrosect 15 W lamp standard, 25 pack Electrosect 15 W lamp sleeved, 25 pack	LUV015-002-25 LUV015-003-25
<b>Glue board:</b> Genus® universal glue board, 20 packs of 15	CBP1300-15-20-M

## FRONT OF HOUSE INSECT LIGHT TRAPS

### Genus® | ECO 30



A new generation insect light trap engineered for reduced energy consumption, ease of servicing and fast fly catch.

- Aluminum finish for smart hygienic appearance
- 2 x 15 Watt lamps and integral reflectors for increased UVA output
- Horizontal or vertical mounting offering flexibility in location
- Easy opening hinged cover for fast, safe and both hands-free consumables replacement

**Product:**

Genus® ECO 30 2 x 15 W lamp standard  
Genus® ECO 30 2 x 15 W lamp sleeved

**Lamps:**

Electrosect 15 W lamp standard, 25 pack  
Electrosect 15 W lamp sleeved, 25 pack

**Glue board:**

Genus® universal glue board, 20 packs of 15

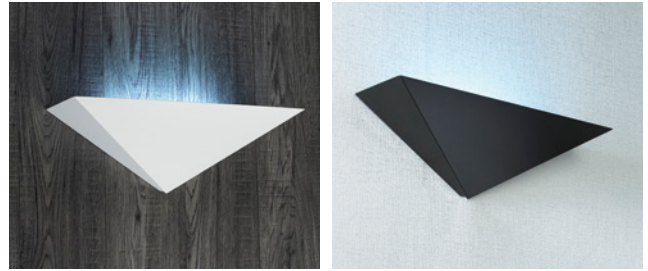
**Order Code:**

EC030-1S12011XXX  
EC030-2S12011XXX

LUV015-002-25  
LUV015-003-25

CBP1300-15-20-M

### Genus® | ILLUMÉ α



Illume Alpha uses 2 x 15W BL or BLB lamps and imitates the look and feel of a modern lighting fixture yet offers a greater insect attraction than many competitor ILTs.

- 30 W (2 x 15 W) units for ultimate insect attraction
- Looks like a modern light fixture
- Available in a range of colours to suit interior décor
- Large capacity glueboards to maximise catch

**Product:**

Illume Alpha White, black light lamps  
Illume Alpha Stainless, black light lamps  
Illume Alpha Brass, black light lamps  
Illume Alpha Black, black light lamps

**Lamps:**

15 W BLB lamps, 25 pack  
15 W BL lamps, 25 pack

**Glue board:**

Genus® Illume glue board, 10 pack

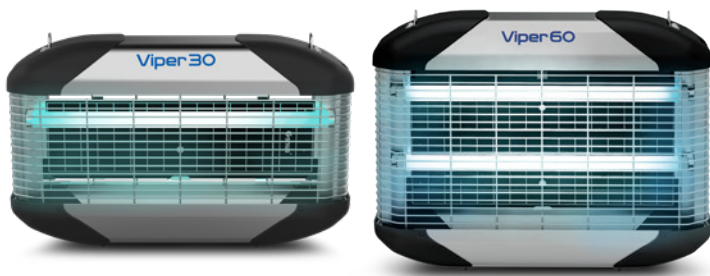
**Order Code:**

ILA30-1WH2011XXXX  
ILA30-1SS2011XXXX  
ILA30-1BR2011XXXX  
ILA30-1BK2011XXXX

LUV015-220-25  
LUV015-200-25

CBP202-10-M

### Viper 30 Viper 60



The Viper 30 and Viper 60 are easy to service catcher units which can be wall mounted or ceiling suspended allowing for precise placement.

- Quick and easy, tool free servicing
- 70mm deep catch tray
- Wall mounted or ceiling suspended location
- 30 W (2x15 W lamps) or 60 W (4x15 W lamps) unit for quick catch
- Grid-marked glue board, large catch area, HACCP compliance

**Product:**

Viper 30 Catcher, 2 x 15 W lamps standard  
Viper 30 Catcher, 2 x 15 W lamps sleeved  
Viper 60 Catcher, 4 x 15 W lamps standard  
Viper 60 Catcher, 4 x 15 W lamps sleeved

**Lamps:**

Electrosect 15 W lamp standard, 25 pack  
Electrosect 15 W lamp sleeved, 25 pack

**Glue board:**

Genus® universal glue board, 20 packs of 15

**Order Code:**

V3C30-1GX2023XXXX  
V3C30-2GX2023XXXX  
V3C60-1GX2023XXXX  
V3C60-2GX2023XXXX

LUV015-002-25  
LUV015-003-25

CBP1300-15-20-M

### Genus® | ECLIPSE ULTRA



A new and innovative insect light trap for public sensitive areas. Fastest fly catch compared to most other front of house units, with a customisable front insert for brand and promotional messaging.

- Translucent Technology™ maximises UVA propagation
- Customisable inserts to facilitate brand promotions and messages
- 2 x 15 W Black Light Blue (BLB) lamps for maximum fly attraction
- Large glue board area to maximise fly catch
- Easy to service, saving time and money

**Product:**

Eclipse Ultra translucent black light blue lamps  
Eclipse Ultra translucent black light lamps  
Eclipse Ultra BrandLite

**Lamps:**

Eclipse Ultra 15 W BLB lamps, 25 pack  
Eclipse Ultra 15 W BL lamps, 25 pack

**Glue board:**

Genus® universal glue board, 20 packs of 15

**Order Code:**

EUT30-3TX2011XXXX  
EUT30-1TX2011XXXX  
Special Order

LUV015-220-25  
LUV015-200-25

CBP1300-15-20-M

# WHERE TO USE OUR PRODUCTS

Products have been categorised by type of product. The chart indicates the environments and application areas that our range of products can typically be used in.

## BACK OF HOUSE GLUE BOARD FLY TRAPS

Genus<sup>®</sup> COBRA

Genus<sup>®</sup> ILT30

Genus<sup>®</sup> ECO 30

Genus<sup>®</sup> LIBERATOR

Viper30

Viper60

## FRONT OF HOUSE GLUE BOARD FLY TRAPS

Genus<sup>®</sup> ECLIPSE ULTRA

Genus<sup>®</sup> ILLUMÉ α

## JET PROOF FLY TRAPS

Genus<sup>®</sup> ORBIT JET

	BACK OF HOUSE GLUE BOARD FLY TRAPS	FRONT OF HOUSE GLUE BOARD FLY TRAPS	JET PROOF FLY TRAPS
<b>RESTAURANTS</b>			
 Kitchen Areas	✓		
Dining Areas		✓	
Storage Areas	✓		
Trash Areas	✓		
Food Preparation Areas	✓		
Bars and Limited Space Areas		✓	
Wet / Wash Down Areas			✓
<b>FOOD PROCESSING PLANTS</b>			
 Dry Production Areas	✓		
Wet / Wash Down Areas			✓
Packaging Areas	✓		
Storage Areas	✓		
Trash Areas	✓		
Warehouse Areas	✓		
Limited Space Areas		✓	
QC Laboratories	✓		
Employee Dining Areas		✓	
Changing / Locker Rooms		✓	
<b>SUPERMARKETS / GROCERIES</b>			
 Deli / Meat / Fish / Produce Areas	✓		
Bakeries	✓		
Warehouse / Receiving Areas	✓		
Employee Break Areas		✓	
Limited Space Areas		✓	
<b>HOTELS / MOTELS</b>			
 Public Areas		✓	
Receiving / Delivery Areas	✓		
Trash Areas	✓		
Kitchen / Food Prep Areas	✓		
Storage Areas	✓		
Non-public Areas / Laundry Room	✓		
Bedrooms		✓	
<b>OFFICE BUILDINGS</b>			
 Dining Areas		✓	
Receiving Areas	✓		
Public / Common Areas		✓	
<b>HEALTHCARE / HOSPITALS / PHARMACEUTICAL / LABS</b>			
 Public Areas		✓	
Receiving / Delivery Areas	✓		
Storage Areas	✓		
Care Wards / Patient Areas	✓	✓	
Non-public Areas	✓		
<b>CINEMAS / THEATERS / ARENAS / STADIUMS</b>			
 Food Service & Concession Areas	✓	✓	
Auditorium		✓	
Storage Areas	✓	✓	
Trash Areas	✓		
Changing / Locker Rooms		✓	
<b>GYMNASIUMS</b>			
 Food Service Areas	✓	✓	
Workout Areas		✓	
Changing / Locker Rooms		✓	
<b>PRISONS / PENAL FACILITIES</b>			
 Food Service / Kitchen Areas	✓	✓	
Staff Areas	✓	✓	
Inmate Areas			
<b>SCHOOLS / EDUCATIONAL INSTITUTIONS</b>			
 Kitchen / Food Prep Areas	✓		
Dining Areas		✓	
Student Housing		✓	
<b>DOCTOR'S / DENTIST'S OFFICES</b>			
 Public Areas		✓	
Treatment Areas		✓	
Laboratory Areas	✓		
<b>RESIDENTIAL</b>			
 Kitchens		✓	
Bedroom			
Lounge areas			