

ExTerminexTM

Exterminex Termite Management System



GUIDE FOR HOMEOWNERS

www.terminex.com.au

TERMITES: AN EMERGING PROBLEM IN THE ARABIAN PENINSULAR

Termites are becoming a growing concern across the Arabian Peninsula, particularly in regions with warm and humid climates. These destructive pests pose a significant threat to homes, businesses, and infrastructure, silently consuming wood and other cellulose-based materials. Left undetected, termite infestations can cause extensive structural damage, leading to costly repairs and long-term property deterioration.

While termites have always existed in the region, urban expansion, increased construction, and changes in environmental conditions have contributed to their rise. Subterranean termites, the most common type in Saudi Arabia and the UAE, live in underground colonies and invade buildings through cracks, foundations, and wood-to-soil contact. They often go unnoticed until the damage becomes severe, making early detection and prevention essential.

Professional termite control solutions are crucial to protecting properties from infestations. Regular inspections, baiting systems, and preventive treatments help identify termite activity before major damage occurs. Exterminex™ Termite Management System offers long-term protection, ensuring that your home or business remains safe from these destructive pests.

If you suspect termites or want to safeguard your property, contact your installer today for a professional inspection. Prevention is key—don't let termites take over your investment!



SIGNS THAT YOU MAY HAVE TERMITES IN YOUR HOME



SWARMER OR WINGED TERMITES

Termite swarmer, also known as alates, are reproductive termites with wings. They have two pairs of wings of equal length. Like many insects, alates are naturally attracted to light. They leave the nest when conditions are right for mating, allowing them to form new colonies. Alates typically appear during the warmer months of the year. Finding swarmers inside your home may indicate the presence of a nest either within the house or nearby.



LIVE TERMITES

It is rare to see termites in open and visible areas. However, if the temperature and humidity are ideal, you may be lucky enough to spot them. Most of the time, homeowners only see live termites when they discover damaged wood in their homes. Once disturbed, termites will quickly retreat to a safe place, making detection even more difficult.



MUD TUBES

Termites travel through mud tubes to protect themselves from predators, sunlight, and dehydration, while also maintaining a high-humidity environment essential for their survival. Sometimes, these tubes can be seen on surfaces as termites search for food and moisture outside their nest. This is a common example of a mud tube built by termites.



VISIBLE DAMAGE

Termites hollow out wood used in homes, including wall frames, floors, and ceilings. Most of the time, homeowners first notice termite damage in baseboards, window frames, or doors. If not detected in time, termites can cause severe structural damage, making a building unsafe to live in.

The Exterminex™ baiting system, combined with annual inspections, helps reduce the risk of long-term termite damage, providing an effective preventive solution.

Termites occasionally leave visible clues, and they often show the following signs. If you notice these behaviors, it is recommended that a pest control expert conducts a more detailed inspection. Certified Exterminex™ installers receive additional training, particularly in termite detection and control.



TRADITIONAL METHODS OF TERMITE CONTROL

Traditional methods for treating termite infestations in buildings generally follow a two-step process.

CHEMICAL SPRAYING, FOAMING, OR DUSTING

In the initial stage of treatment, this method involves applying liquid chemicals, dust, or foam directly onto infestation points in the hope that termites will come into contact with the poison. However, this approach only kills foraging termites and may not completely eliminate the colony, which could be up to 50 meters away from the building or located beneath the house's foundation.

If the nest is not eradicated, the queen may survive, continue laying eggs, and termite activity will reappear in other areas. For this reason, pest controllers do not guarantee this initial procedure using liquids, dust, or foams.

DRILLING AND CHEMICALLY TREATED ZONES

The drilling and injection method or the creation of a chemically treated zone (chemical barrier) involves treating the soil around the building's perimeter by drilling into external or internal concrete slabs. A trench is then dug, and toxic chemicals are pumped into the soil, creating a chemical barrier that prevents termites from passing through the treated ground.

However, creating an effective chemical barrier is more difficult than it seems because: Gaps in the barrier, slab, or brickwork may allow termites to find alternative entry points.

If the nest is inside the structure or beneath the foundation, termites may become trapped inside the barrier, potentially leading to long-term problems.

Chemical barriers are expensive and limited, and they may not provide continuous protection. Additionally, they pose health and environmental risks, making them a less sustainable option for termite control.



Conventional Methods



ELIMINATION OF THE TERMITE QUEEN



MINIMAL DISTURBANCE TO PROPERTY



NON TOXIC - SAFE



LONG TERM SOLUTION



Traditional termite control methods rely on chemical treatments, but ExTerminex does not require any harsh toxic chemicals. This innovative solution provides effective control by colony elimination and death to the queen.

ECO FRIENDLY & COST EFFECTIVE SOLUTION

ExTerminex™

Effectively eliminates termites with minimal chemical use.



The exclusive Exterminex™ system intercepts foraging termites where they are present beneath the soil. During routine inspections, if termites are detected, bait is installed, leading to the elimination of the colony.

EXTERMINEX™ BAITING SYSTEM TOTAL COLONY ELIMINATION

The Exterminex™ Baiting System – Involves the strategic placement of monitoring stations with a non-toxic early-warning bait in and around a building. This ensures complete colony elimination and long-term termite protection. The process follows three key steps:

ATTRACTIVE

Highly palatable bait designed to ensure efficient interception based on termite foraging patterns. Precision-engineered formulation ensures maximum termite uptake.



PROVEN

More than 90% of known subterranean termite species that destroy homes actively feed on Exterminex™ bait matrix, which contains 0.1% chlorfluazuron. This ingredient disrupts the molting process, ensuring colony elimination.



PROTECTION

Developed by industry professionals, Exterminex™ is a comprehensive termite management system used to protect homes in Australia and globally.



TREATMENT FOR ACTIVE TERMITES Above-Ground (AG) Baiting System

Exterminex™ AG bait stations are installed on active termite infestation points, such as walls or wooden floors, to intercept foraging termites and draw them toward the bait station. The highly palatable bait matrix ensures termites consume and spread the bait, leading to complete colony elimination—a more effective solution than traditional methods.

Treatment & Colony Elimination Process. Certified Exterminex™ professionals conduct scheduled inspections to monitor both Above-Ground (AG) and In-Ground (IG) bait stations. A trained specialist will apply additional bait only when necessary until the nest is fully eradicated and your home is termite-free. Exterminex™ professionals are highly trained to identify termite activity, monitor elimination progress, and ensure the job is done right the first time.

ONGOING MANAGEMENT & PROTECTION Preventing Future Infestations.

After successful termite colony elimination, your Exterminex™ certified pest control professional will conduct annual inspections to monitor the property.

In-Ground (IG) bait stations are non-toxic and contain a special timber lure, acting as an early-warning system for termite infestations. If new termite activity is detected, additional Exterminex™ bait can be introduced to the stations outside your home to eliminate the threat before it causes damage.

Continuous Monitoring & Maintenance. Bait and termite interceptors are regularly checked and replenished through an ongoing monitoring program. Exterminex™ ensures total colony elimination under the supervision of a certified professional, providing peace of mind and long-term termite protection.

EXTERMINEX™ – THE BAITING PROCESS



ExTerminex™

TREATMENT

Termites prefer the bait instead of your home. Once installed, Termites feed on the bait, whilst unknowingly ingesting and spreading the killing agent to other nest mates including The Queen.



DEATH TO THE QUEEN

Once the Queen is eliminated, she cannot lay eggs resulting in colony elimination and no more termite activity.



LONG TERM PROTECTION

The exclusive Exterminex™ system intercepts termites before they enter the building. Certified professionals inspect the system regularly. If termites are detected, bait is installed to eliminate the colony and or any other termites present.



BACKED BY RESEARCH AND DEVELOPMENT

EXTERMINEX™ A SCIENTIFICALLY PROVEN SOLUTION FOR TERMITE CONTROL

Exterminex™ has been rigorously tested and validated by scientists and expert entomologists worldwide, proving its effectiveness in eliminating termite colonies.

Research has consistently demonstrated that termite baiting is a more reliable and long-lasting solution compared to traditional chemical treatments, which only act as temporary barriers. Unlike chemical products that degrade over time and may not reach the core of the colony, Exterminex™ works through a transfer effect, ensuring total colony elimination, including the queen.

Commitment to Research & Development, Significant investment has gone into the research and development of Exterminex™, refining its performance through continuous trials and improvements. These advancements have resulted in one of the most reliable termite baiting solutions on the market.

The formulation is designed to be highly attractive to termites, encouraging consumption and distribution throughout the colony, ultimately leading to complete colony collapse.

Global Adoption & Proven Performance, Originally developed in Australia, Exterminex™ has been adopted in multiple regions worldwide where termites pose a significant threat to homeowners. From Asia to the Americas, pest control professionals trust Exterminex™ as a scientifically backed and proven solution for termite management. Its ability to provide long-term protection without requiring extensive chemical treatments or structural modifications makes it the preferred choice for both professionals and homeowners.

ExTerminex™



REPORT

Steven Cheng PhD
 Genetics Laboratory, Forest Research Institute Malaysia (FRIM) 52100 Selangor, Malaysia
 E-mail: steven@frim.gov.my; Tel: +603 2579 7120

1.0 INTRODUCTION

1.1 Subterranean termites are pests of houses and buildings throughout the world. Subterranean termites have the innate ability to cause structural damage to the wood used in the construction of houses and buildings as well as to wooden or wood-based products. In the past, termite control has been achieved through the use of liquid termiticides. However, the control of subterranean termites globally has been achieved via a population management. In this method, food in the form of oligochlorane that is toxic to termites is used as baiting stations for termites. Prolonged feeding on this toxic bait eventually leads to the control or death of the colony. This is done with the help of termite baiting stations placed strategically near habitats of termites activity. One such termite baiting station consists of monitoring stations located around the perimeter of a house or building and which aims to intercept pest termites before they can even initiate attack in houses and buildings.

1.2 In-ground termite monitoring stations are essentially cylindrical-shaped, plastic containers buried into the ground and which have exit- and entry holes that allow termites to fly in- and out of the stations. Installed into these in-ground monitoring stations are wooden blocks or stumps that function to bait or intercept pest termites. These monitoring stations however require periodic inspection and servicing.

1.3 In this study, we evaluate "Exterminex" in ground (IG) monitoring station with Flou (F), wooden blocks (W) and pest termites and to test the ability of Flou (F) used in Exterminex™ in the field. We also evaluated the effect of a IG-Ground paper sleeve (IGGS) on the interception rate of Exterminex™. The findings for Exterminex™ use also functioned to prevent re-entering and flooding the stations in situations where the soil water holding is of a sandy disposition.

1.4 In short, the objectives of this study are:

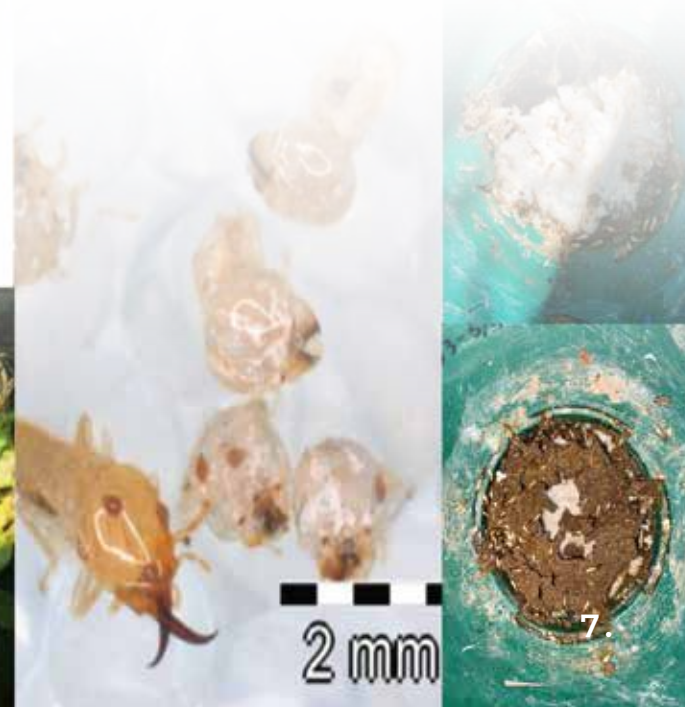
- Test the attractiveness of Flou and without sleeve to intercepting parties of termites into Exterminex™ monitoring station.
- Test the efficacy of the direct intercepting termites at distance 2 feet away from active termites holes.

2.0 MATERIALS & METHODS

2.1 Exterminex™ intercepter was set up, wooden blocks and IG-Ground paper sleeve were installed around a termite hole in the Forest Research

Distance from active termites hole (ft)	Flou (F)	Wooden block (W)	Without sleeve
1 feet	Continuous contact	Continuous contact	Continuous contact
2	Contact at month 1	Contact at month 1	Contact at month 1
3	Continuous contact	No contact	No contact
4	Continuous contact	No contact	No contact
5	Contact at month 3	Contact at month 3	Contact at month 3

Note: Activities used to indicate interception of termites by IG stations on month 2 of the study/trial.



2 mm

COMMON ASKED QUESTIONS

I HAVE FOUND SIGNS OF A TERMITE INFESTATION IN MY HOME. WHAT

SHOULD I DO? First, do not spray chemicals or disturb the area around the infestation. Eliminating a termite colony requires specialized skills and the use of proper equipment by trained professionals. Contact an Authorized Exterminex™ Applicator to ensure the problem is treated correctly.

WHY SHOULD I CHOOSE THE EXTERMINEX™ TERMITE BAITING SYSTEM? The Exterminex™ Termite Baiting System is designed to eliminate termites at their source, directly targeting the queen and the hidden nest.

Unlike chemical treatments that only create temporary barriers, Exterminex™ works through a transfer effect: termites consume the bait, carry it back to the colony, and share it with others, ensuring total elimination.

With both Above-Ground (AG) bait stations for active infestations and In-Ground monitoring systems for long-term protection, Exterminex™ eliminates the entire colony, including the queen, stopping termites before they cause further damage.

IS EXTERMINEX™ EFFECTIVE ENOUGH TO ACHIEVE TOTAL COLONY ELIMINATION? Yes, Exterminex™ includes all the necessary components and products to effectively eliminate and manage subterranean termite infestations.

Above-Ground (AG) Bait Stations – Part of Stage 1 in the Termite Management Solution, these stations act as a corrective treatment for active infestations inside your home. They intercept termite foraging routes, attracting termites to consume the bait instead of continuing to damage your property.

In-Ground Monitoring System (Stage 2) – Installed strategically around your property's perimeter to detect and intercept termites before they invade your home. These stations serve as an early-warning system, stopping termites before they cause costly and irreversible damage.

With Exterminex™, you get a proven two-stage defense system, designed to eliminate active infestations and prevent future termite attacks, ensuring long-term protection for your home.

IS IT SAFE FOR MY CHILDREN AND PETS TO PLAY NEAR THE EXTERMINEX™ BAIT STATIONS? Yes, Exterminex™ bait is enclosed in a well-protected and secure bait station.

Additionally, the bait is highly effective against termites but has extremely low toxicity to mammals, making it safe for households with children and pets. We advise keeping children and pets away to avoid tampering as to ensure the termites do not shy away from the stations.



ExTerminex™

SAFE. EFFECTIVE. TERMITE MANAGEMENT.



Notes:

www.terminex.com.au

The information in this catalog was accurate at the time of printing. However, ExTerminex™ reserves the right to modify specifications, designs or colors of the products listed in this publication at any time.

For the most up-to-date details and promotions, Please contact your authorized ExTerminex™ installer.

Distributed By:



Ecovar Trading:
Business Bay, Bay Square,
Bldg 1-104 - Dubai - United Arab Emirates

+971 4 366 3302
marketing@ecovargroup.com