

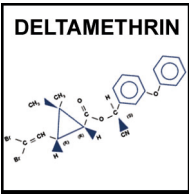


The Strongest, Always
Prolonged Action Insecticide



Bayer Environmental Science
A Business Operation of Bayer CropScience

K-Othrine[®]
SC Flow 25



Deltamethrin: the best

K-Othrine SC Flow 25 containing 2.5% of the active isomer of the pyrethroid deltamethrin which make it more effective. Due to the unique synthesis process of Deltamethrin, BES can guarantee the purity and maximum effectiveness of K-Othrine.



K-Othrine: the strongest, always

K-Othrine SC 25 is a suspension concentrate containing Deltamethrin, a photostable pyrethroid (25.26 g - Formulation and Adjuvants distilled in 1 Ltr water). K-Othrine SC 25 acts primarily by contact but also by ingestion. Micro-crystals Deltamethrin suspended in an aqueous solution gives this formulation efficacy and continuing exceptional action. The special formula of K-Othrine SC 25 also provides prolonged protection and good resistance to water washout



Broad spectrum Insecticide

K-Othrine SC 25 demonstrates its optimal action on various insects with a high knock down power, used for treatment of residual surface and within the immediate vicinity of public buildings including restaurants, hospitals, homes, industrial warehouses, against crawling insects (cockroaches, fleas, bugs, ...) and Flying (flies, mosquitoes, ..)



Usage

K-Othrine SC 25 is designed for spraying on porous surfaces. It is mandatory diluted in water and applied using a compression sprayer or other device to obtain a spray-wetting.

Crawling Insects: 50 ml/ 5 ltrs/ 100 m2.

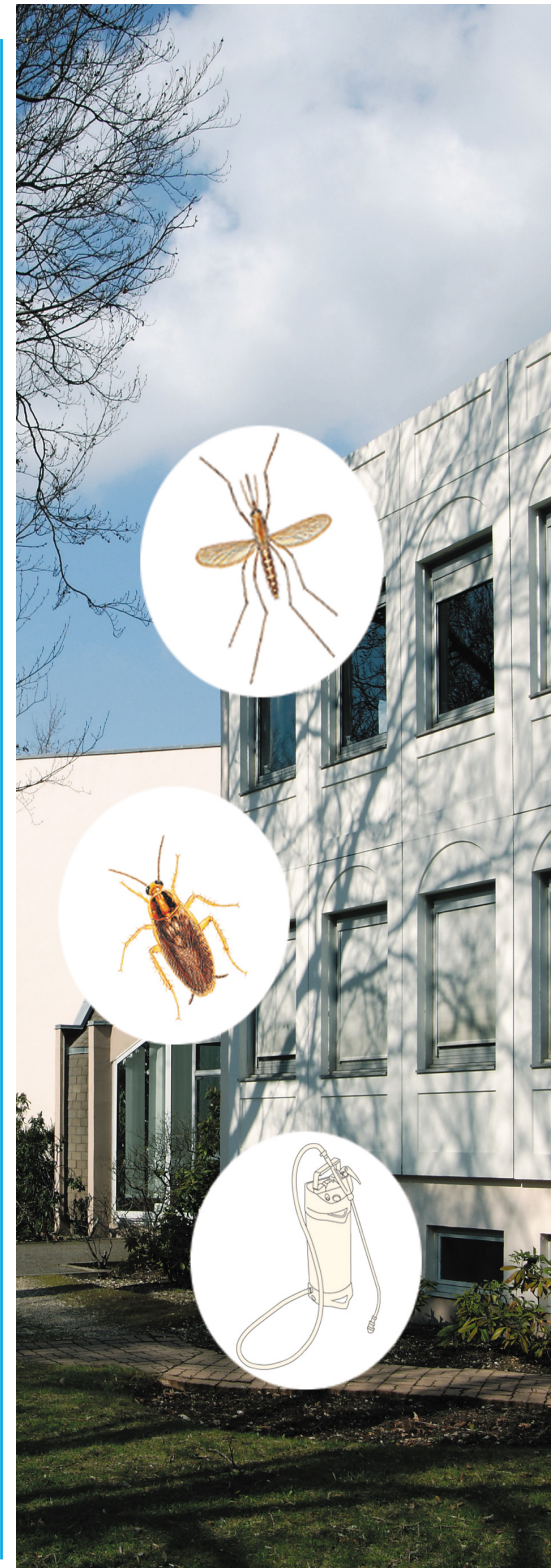
Stored Products Insects: 25 ml/ 5 ltrs/ 100 m2.

Flying Insects: 25 ml/ 5 ltrs/ 100 m2.



Impact on the environment

Protecting Tomorrow, Today" (PTT) defines Bayer's contribution to global sustainability. Bayer recognizes the importance of responsibility for our planet and environment.



Always Read The Label. Use Pesticides Ssfely. K-Othrine SC Flow 25® is a trademark of Bayer.

Bayer S.A.S
Bayer Environmental Science SAS
16, rue Jean-Marie Leclair CP106
F-69266 Lyon Cedex 09
France



Bayer Environmental Science
A Business Operation of Bayer CropScience



K-Othrine[®]
SC Flow 25