

DeTour^{FOR}Rodents

A Bio-Repellent by PiGNX

Application Instructions

When using **DETOUR for Rodents** follow these Guide lines

DeTour for Rodents is a CONTACT repellent. **DeTour** will not harm rodents. It is a contact irritant. In order for it to work it must be placed in areas where rodents will come in contact with it and get the product on them. Once a Rodent has come in contact with the product they will avoid the area and may leave the structure entirely.

DeTour for Rodents also elicits a stress response that will lower the rodents' normal shyness to new things and can enhance the operation of current rodent mechanical traps and baits.

Most on-going rodent control programs are very *static*- relying on mechanical devices or baits set at regular intervals. **DeTour** is *dynamic* – the user needs to think their way through the application, consider all the dynamics and develop a strategy to either drive rodents away from the structure or use the product in combination with existing equipment to enhance the program.

Application Cautions



Make sure **DeTour** is never placed in areas where humans may accidentally come in contact with the product. The active ingredient, White Pepper, may cause a reddening of the skin or eye irritation.

Applicators should wear latex gloves when applying **DeTour**. Any product that contacts the skin should be removed by immediately washing the affected area with soap and water or through the use of baby wipes or other alcohol-based wipes.

General Use Instructions

(Specific strategies for the use of DeTour are outlined below!)

DETOUR for Rodents must be placed in the direct path of Rodents where contact will occur. Look for areas of rodent activity including locations where droppings, rub marks or gnaw marks are visible and place **DeTour** in the path of the rodents.

DETOUR may be used in any of the locations listed as long as placements are in areas where people or pets will not contact the applied material.

1. Kitchens
2. Food storage areas
3. Behind fixtures
4. Underneath or Behind Cabinets
5. Ceilings
6. Attic Spaces
7. Behind or Underneath Kitchen Equipment
8. Inside voids/chases in walls, floors or ceilings
9. Exterior perimeter at any potential entry point and along areas where rodents might travel
10. Under Grocery Store Gondolas to create a rodent "no-Go Zone"
11. Inject directly into inaccessible wall voids to drive rodents out of hiding.
12. Areas where you see signs of activity include feces, urine trails and rub marks
13. Around the base of trees
14. Directly into Rodent Burrows
15. Identify food sources and use **DeTour** to cut off rodents from the food source

Product Packaging Options



DeTour in the 10 Oz Tubes requires the use of a standard caulking gun

Bulk product may be applied using a bulk loading caulking gun for wall injection or bead application or using a paint brush or putty knife for a wider spreading option. You may also make your own repell-trays using the bulk product with foam trays, plastic tray or similar materials.



DETOUR for Rodents should or can be used with other rodent control products such as glue traps, snap traps and baits. **DETOUR for Rodents** can enhance their effectiveness.

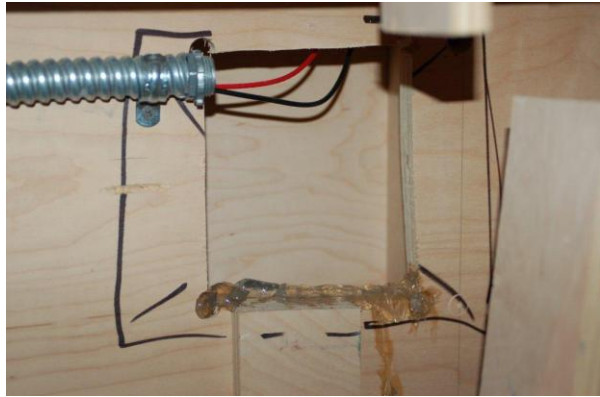
Apply **DETOUR for Rodents** to visible rodent entry points in walls, ceilings and floors



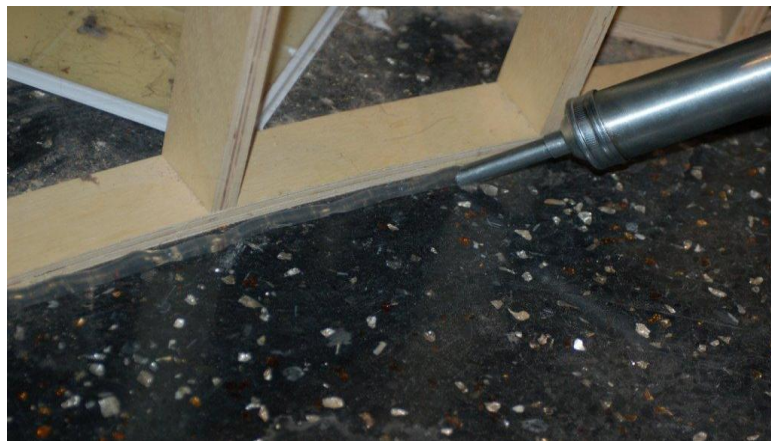
In Commercial Kitchens apply **DETOUR for Rodents** at ground level directly behind kitchen equipment so it cannot be scrubbed away or washed away easily. If product can be accessed by humans place in a tamper-resistant stations or use DeTour Repel-Trays or removable placements described below.



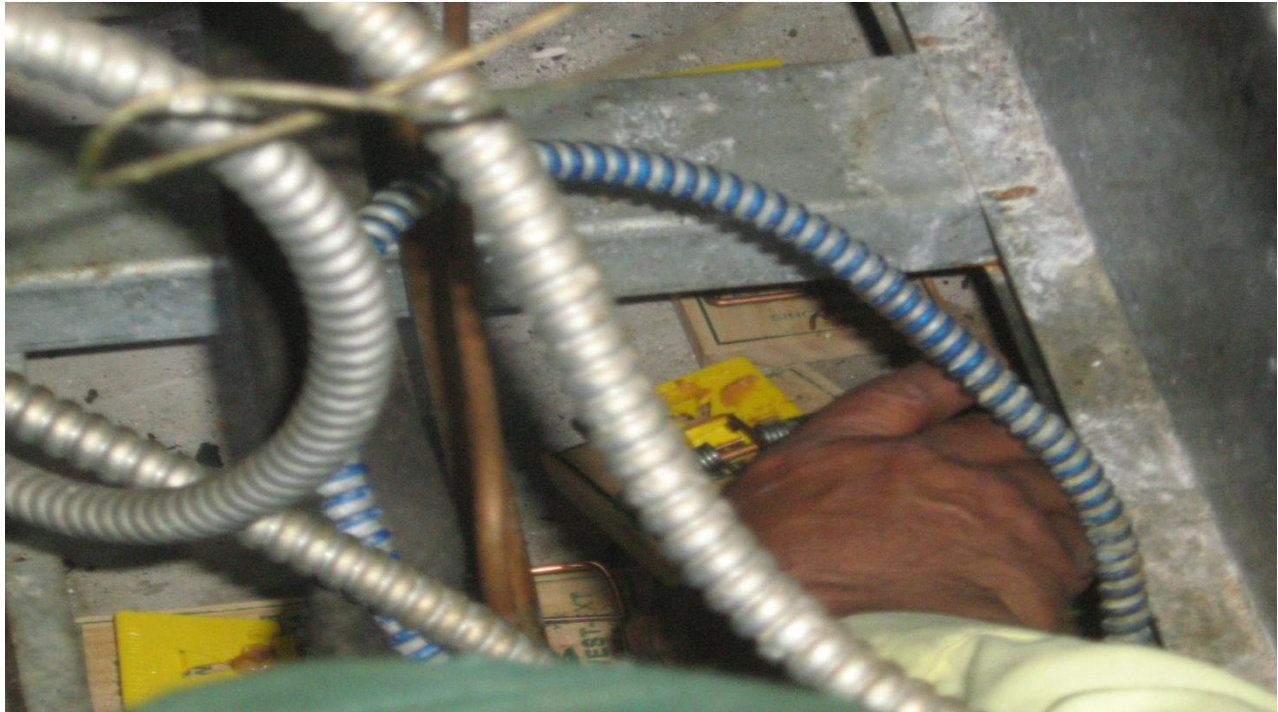
In machinery access panels apply **DETOUR for Rodents** around openings for plumbing, gas and electrical lines



Apply **DETOUR for Rodents** to possible paths of travel such as interior perimeter walls, near door thresholds, at the base of columns. **DETOUR for Rodents** can also be brushed onto areas where a bead cannot be applied. A thin layer of **DETOUR for Rodents** will provide the best results.



DeTour can be used in all inaccessible areas where other rodent equipment just won't fit.
Use **DeTour** to drive rodents from these inaccessible areas.



In T-Bar or Drop Ceilings- **DETOUR for Rodents** should also be applied to paths of travel above ceilings such as sprinkler lines, water lines, electrical pipes and gas lines. Use DeTour Repel-Trays or other temporary placements or apply with a paint brush for maximum coverage. Do not place directly on porous ceiling tiles as product may be absorbed by the tiles.





Specific Strategy Instructions

Rodent Infestations – Cleanouts

Use **DeTour for Rodents** in conjunction with a sound rodent eradication strategy. Apply **DeTour for Rodents** as described above to every conceivable area where rodents will contact the product. Make sure there is **DeTour for Rodents** a placement every 10 feet where practical to insure rodent contact. Use a combination of all the available product delivery systems.

Apply the **DeTour for Rodents** after hours in severely infested locations. Stressed rodents will become very active once exposed to the product and they will attempt to leave the structure. Make sure you have also developed a sound rodent management strategy that incorporates traps, glue boards and baits for the best results.

When the rodents are affected by contact with **DeTour**, they will attempt to leave the structure and can be caught in pre-positioned traps. Stressed rodents may also start to enter stations and consume baits they have previously avoided. Employ this strategy until control is achieved.

Rodent Management Programs

Use **DeTour for Rodents** to augment an existing rodent management program. Use as described above to repel rodents and to keep them moving enhancing the likelihood they will leave or be caught. Use as directed to prevent entrance into the structure.

Rodent Prevention Strategies

Use **DeTour for Rodents** around the exterior at any potential entry point. A bead of product around the exterior perimeter between the siding and the foundation can effectively prevent any rodent from entering the structure.

