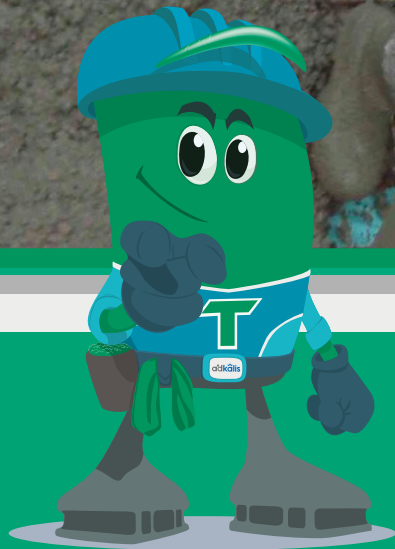


**TERMIFILM**<sup>®</sup>

To **build**  
on  **durable bases**



**Installation manual\***

*\*Translation of the french installation manual*



# Installation Manual



## BASEMENT WALL CONCRETE MASONRY UNITS

### 1. GROUND SLAB

- 1.1 Solid Earth Paving / Concrete masonry units
- 1.2 Solid Earth Paving / Concrete masonry units / Ties
- 1.3 Solid Earth Paving / External insulation / Concrete masonry units / Ties
- 1.4 Solid Earth Paving / Concrete masonry units / Terrace
- 1.5 Floating slab / Concrete masonry units / Ties

### 2. FLOOR ABOVE CRAWL SPACE

- 2.1 Floor above crawl space < 60 cm / Concrete masonry units
- 2.2 Floor above crawl space > 60 cm / Concrete masonry units

## BASEMENT WALL CAST-IN-PLACE OR SLEEPERS

### 3. GROUND SLAB

- 3.1 Solid Earth Paving / Sleepers
- 3.2 Solid Earth Paving / Sleepers / Industrial building
- 3.3 Floating slab / Sleepers / Insulation / Industrial building
- 3.4 Floating slab / Sleepers / External insulation / Industrial building

### 4. FLOOR ABOVE CRAWL SPACE

- 4.1 Floor above crawl space < 60 cm / Cast-in-place concrete
- 4.2 Floor above crawl space > 60 cm / Cast-in-place concrete

### 5. FLOOR ABOVE BASEMENT

- 5.1 Floor above basement / Concrete masonry units
- 5.2 Floor above basement / Cast-in-place concrete

## TIMBER FRAME HOUSE (TFH)

### 6. TFH GROUND SLAB

- 6.1 TFH Solid Earth Paving / Insulation under slab
- 6.2 TFH Solid Earth Paving / Insulation above slab
- 6.3 TFH Floating slab / Ties
- 6.4 TFH Floating slab / Sleepers

### 7. TFH ABOVE CRAWL SPACE

- 7.1 TFH Floor above crawl space > 60 cm / Basement in masonry units
- 7.2 TFH Floor above crawl space < 60 cm / Concrete masonry units

### 8. TFH FOUNDATION SLAB

- 8.1 TFH Foundation Slab

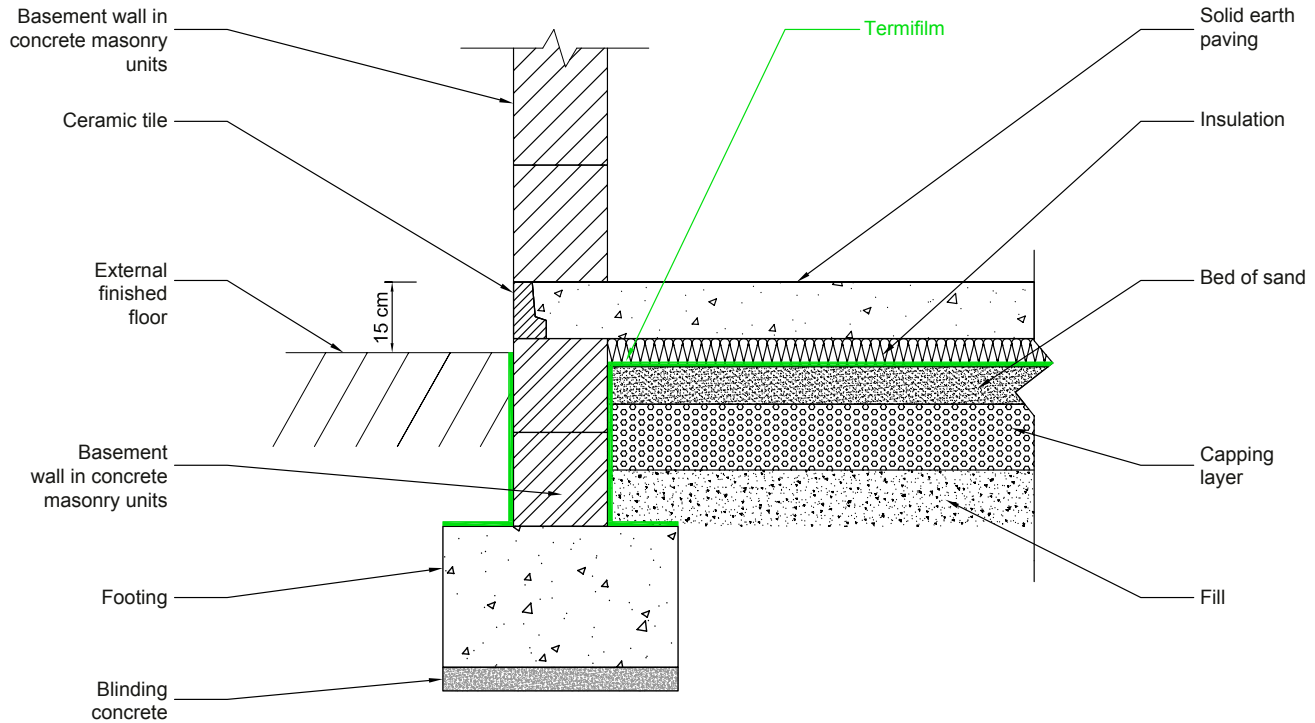
## VULNERABLE POINTS

### 9. POINTS SINGULIERS

- 9.1 Single duct / Termifilm
- 9.2 Multiple ducts / Before casting / Termifilm



# 1.1 - Solid Earth Paving / Concrete masonry units

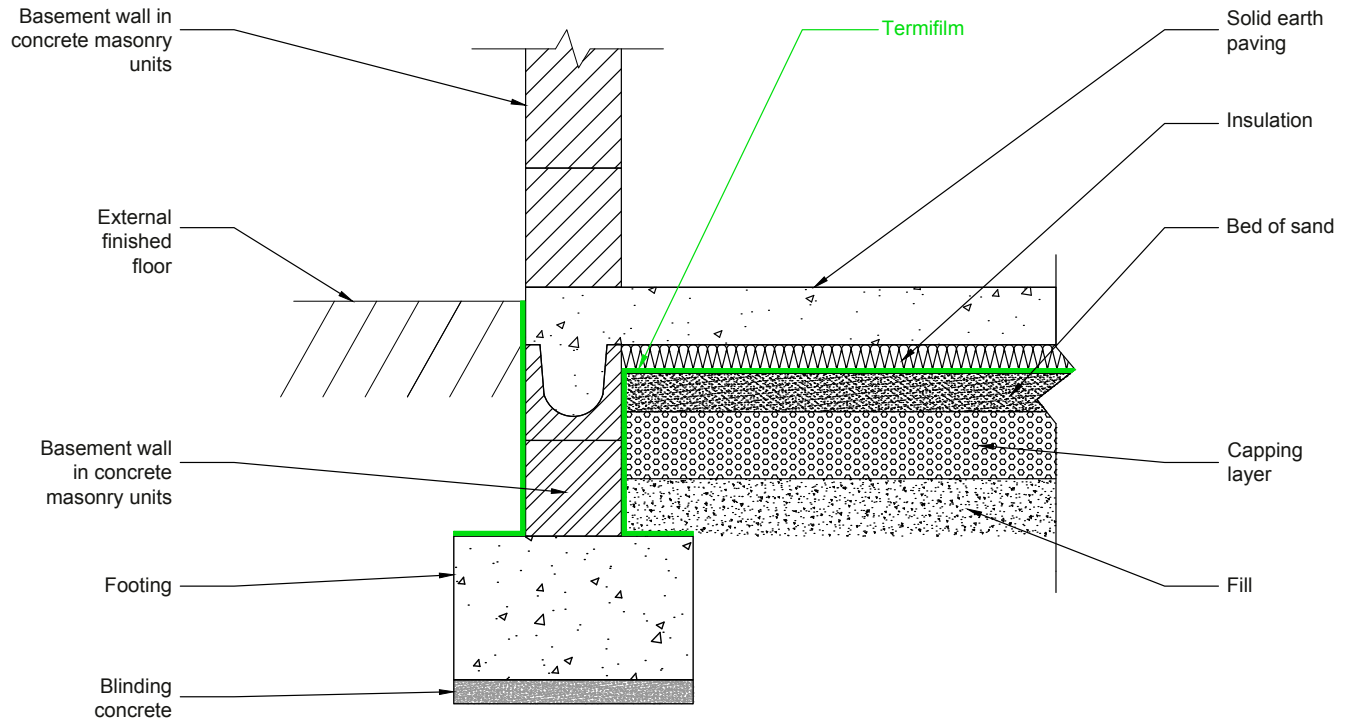


ALL ZONES | Seismic and non-seismic

September 2021

This drawing is the property of Adkalis and cannot be communicated, used, or duplicated by a third party, without written consent - September 2021. Before implementation, ensure that this plan has not been modified by a more recent version that may take into account new data. \*For the legend, see page 2 of this document.

## 1.2 - Solid Earth Paving / Concrete masonry units / Ties

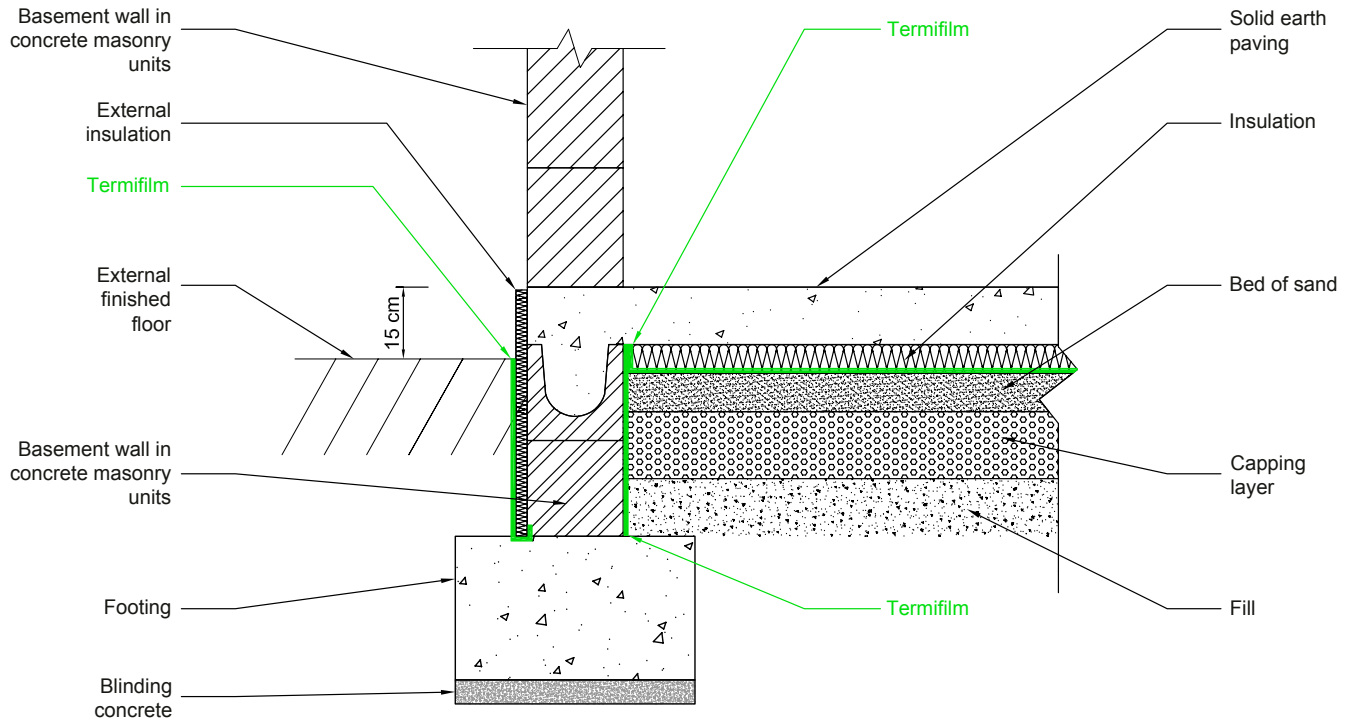


ALL ZONES | Seismic and non-seismic

This drawing is the property of Adkalis and cannot be communicated, used, or duplicated by a third party, without written consent - September 2021.  
Before implementation, ensure that this plan has not been modified by a more recent version that may take into account new data. \*For the legend, see page 2 of this document.

September 2021

### 1.3 - Solid Earth Paving - External insulation / Concrete masonry units / Ties

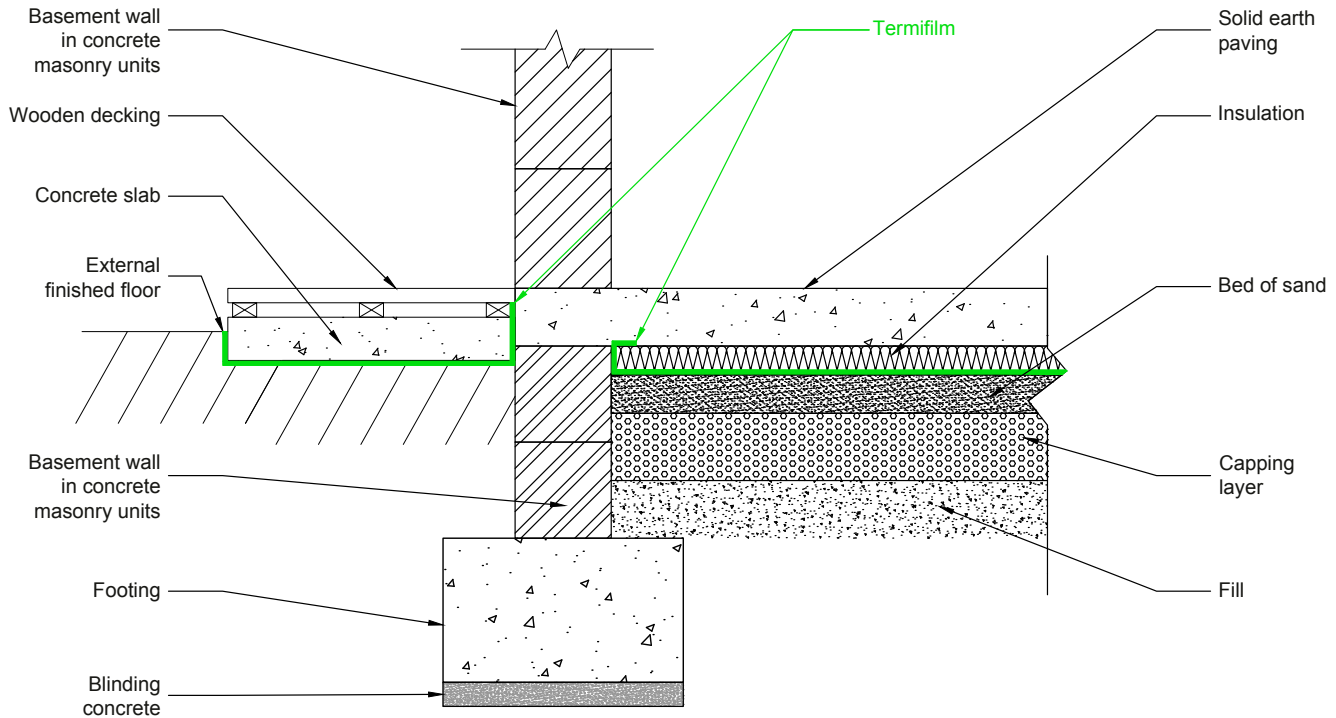


ALL ZONES | Seismic and non-seismic

This drawing is the property of Adkalis and cannot be communicated, used, or duplicated by a third party, without written consent - September 2021. Before implementation, ensure that this plan has not been modified by a more recent version that may take into account new data. \*For the legend, see page 2 of this document.

September 2021

## 1.4 - Solid Earth Paving / Concrete masonry units / Terrace

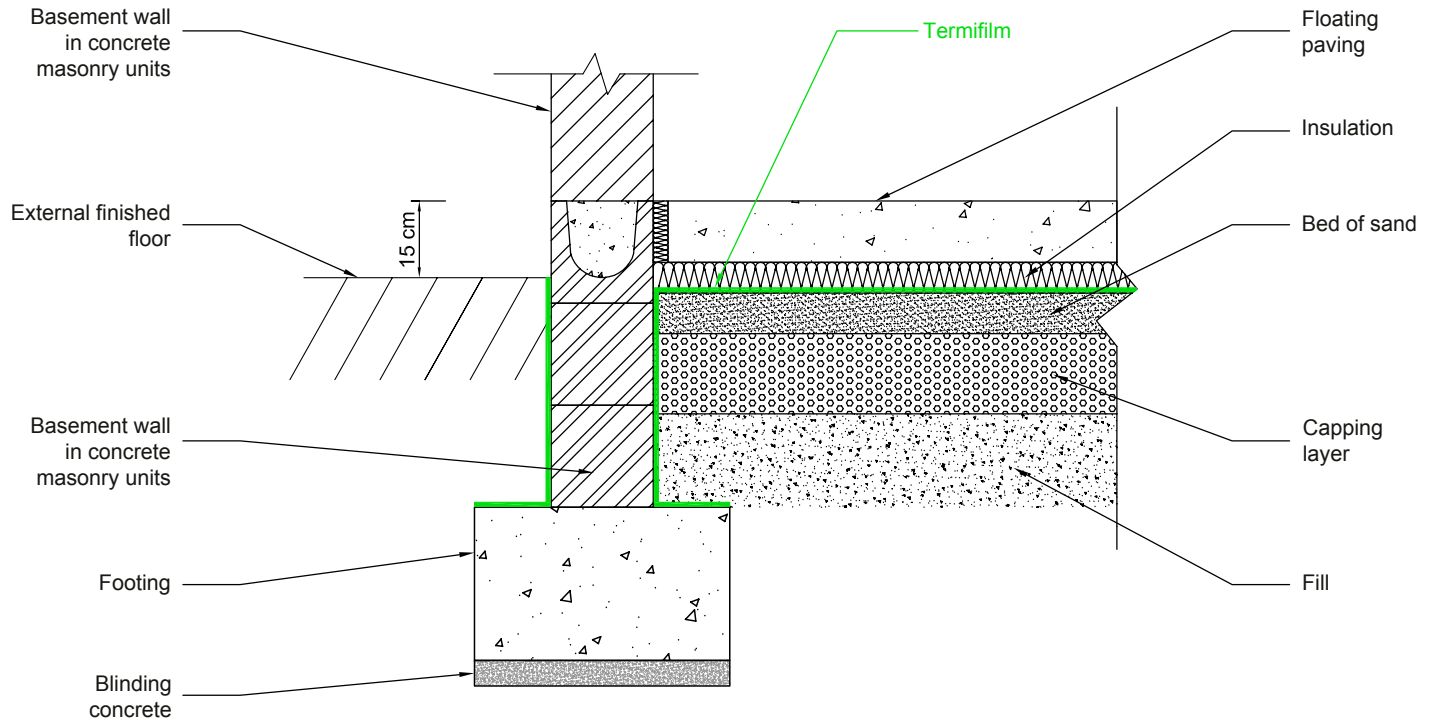


ALL ZONES | Seismic and non-seismic

This drawing is the property of Adkalis and cannot be communicated, used, or duplicated by a third party, without written consent - September 2021.  
 Before implementation, ensure that this plan has not been modified by a more recent version that may take into account new data. \*For the legend, see page 2 of this document.

September 2021

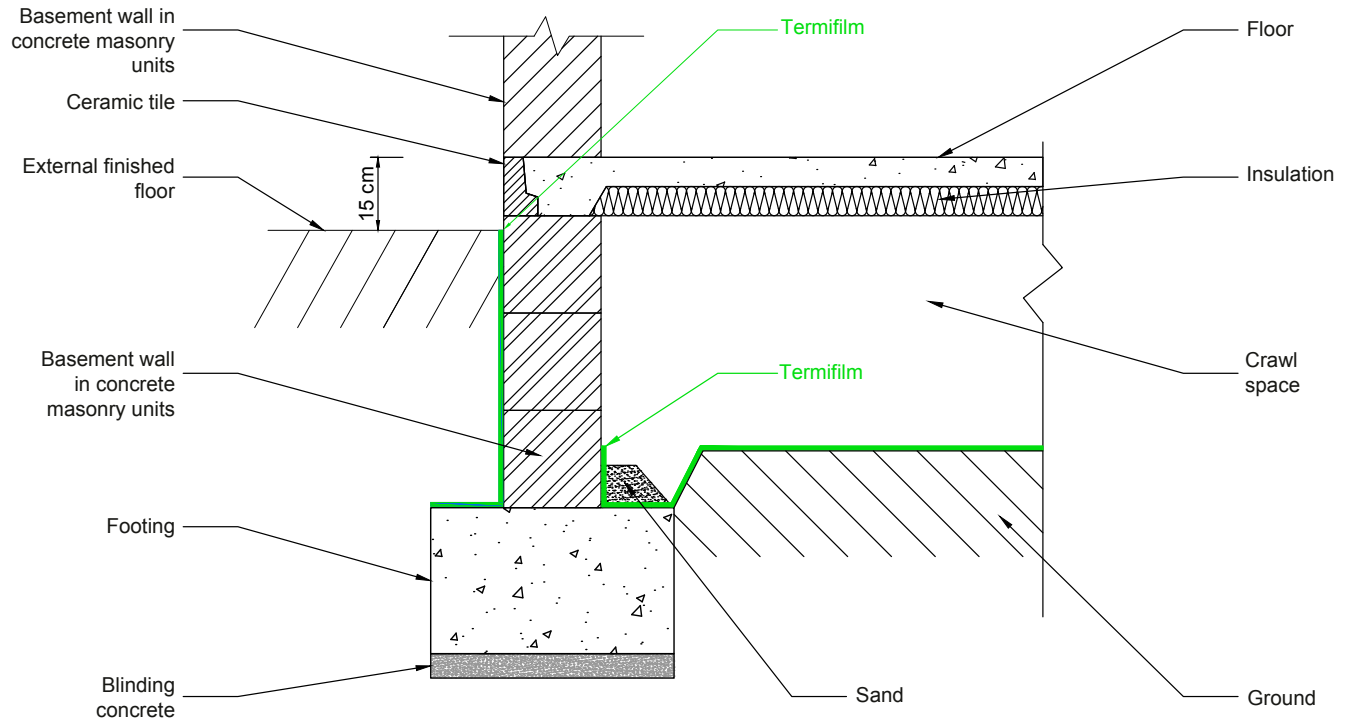
# 1.5 - Floating slab / Concrete masonry units / Ties



ALL ZONES | Seismic and non-seismic

This drawing is the property of Adkalis and cannot be communicated, used, or duplicated by a third party, without written consent - September 2021.  
Before implementation, ensure that this plan has not been modified by a more recent version that may take into account new data. \*For the legend, see page 2 of this document.

## 2.1 - Floor above crawl space < 60 cm / Concrete masonry units

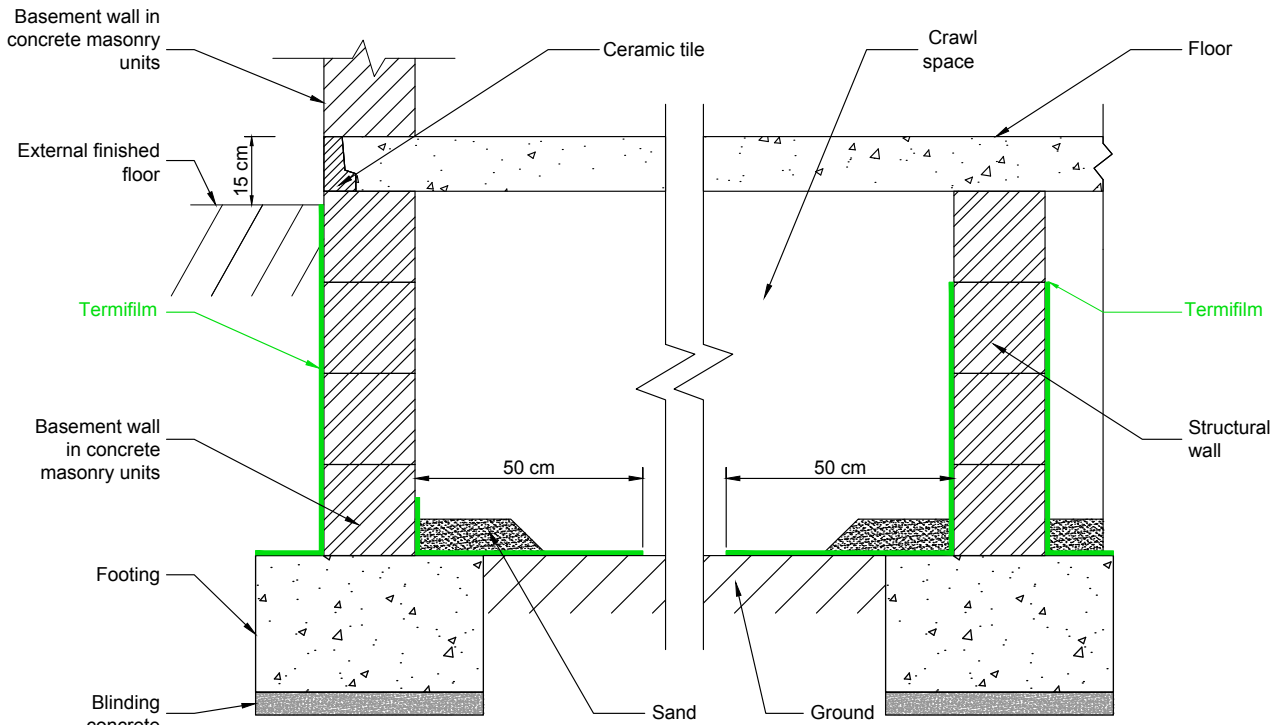


ALL ZONES | Seismic and non-seismic

This drawing is the property of Adkalis and cannot be communicated, used, or duplicated by a third party, without written consent - September 2021. Before implementation, ensure that this plan has not been modified by a more recent version that may take into account new data. \*For the legend, see page 2 of this document.

September 2021

## 2.2 - Floor above crawl space > 60 cm / Concrete masonry units

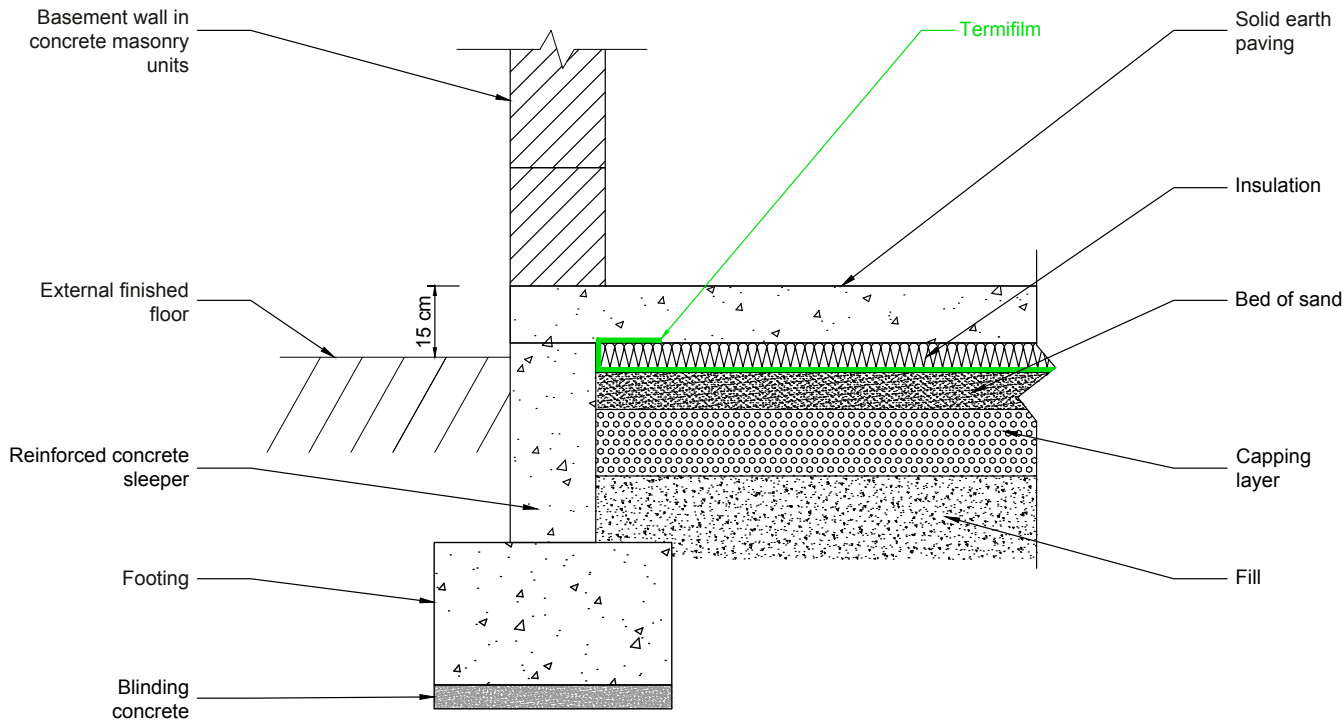


ALL ZONES | Seismic and non-seismic

This drawing is the property of Adkalis and cannot be communicated, used, or duplicated by a third party, without written consent - September 2021.  
Before implementation, ensure that this plan has not been modified by a more recent version that may take into account new data. \*For the legend, see page 2 of this document.

September 2021

### 3.1 - Solid Earth Paving / Sleepers

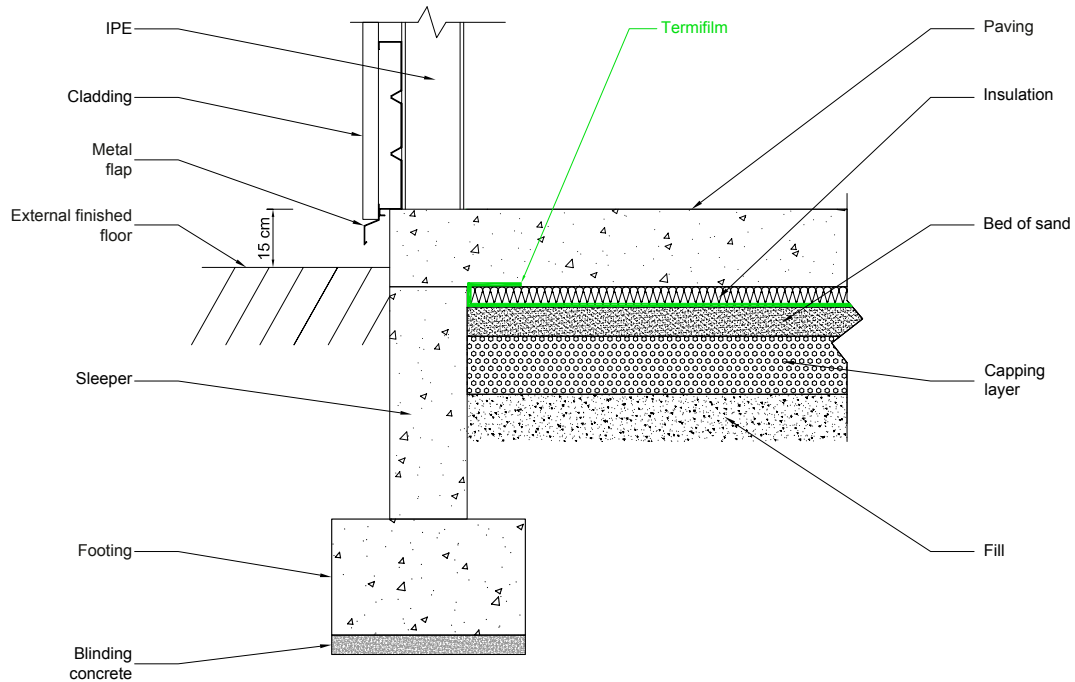


ALL ZONES | Seismic and non-seismic

This drawing is the property of Adkalis and cannot be communicated, used, or duplicated by a third party, without written consent - September 2021. Before implementation, ensure that this plan has not been modified by a more recent version that may take into account new data. \*For the legend, see page 2 of this document.

September 2021

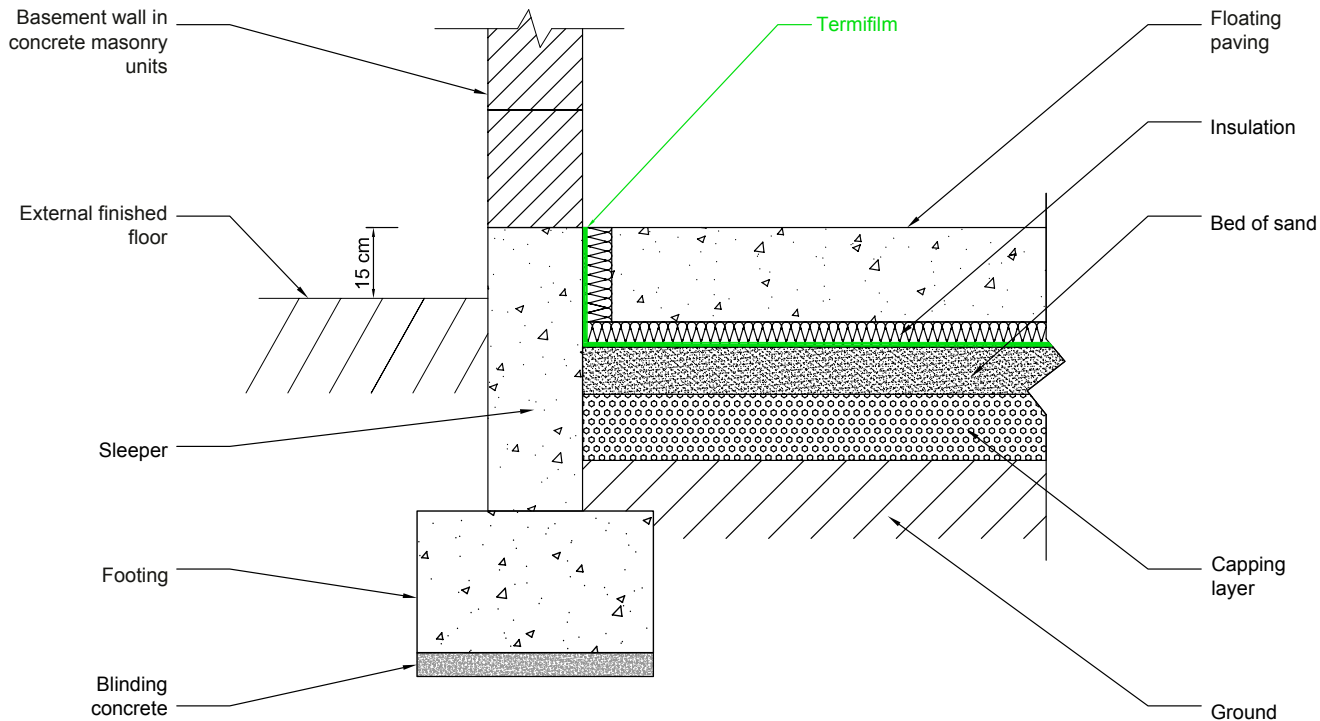
## 3.2 - Solid Earth Paving / Sleepers / Industrial building



ALL ZONES | Seismic and non-seismic

This drawing is the property of Adkalis and cannot be communicated, used, or duplicated by a third party, without written consent - September 2021.  
Before implementation, ensure that this plan has not been modified by a more recent version that may take into account new data. \*For the legend, see page 2 of this document.

### 3.3 - Floating slab / Sleepers / Insulation / Industrial building

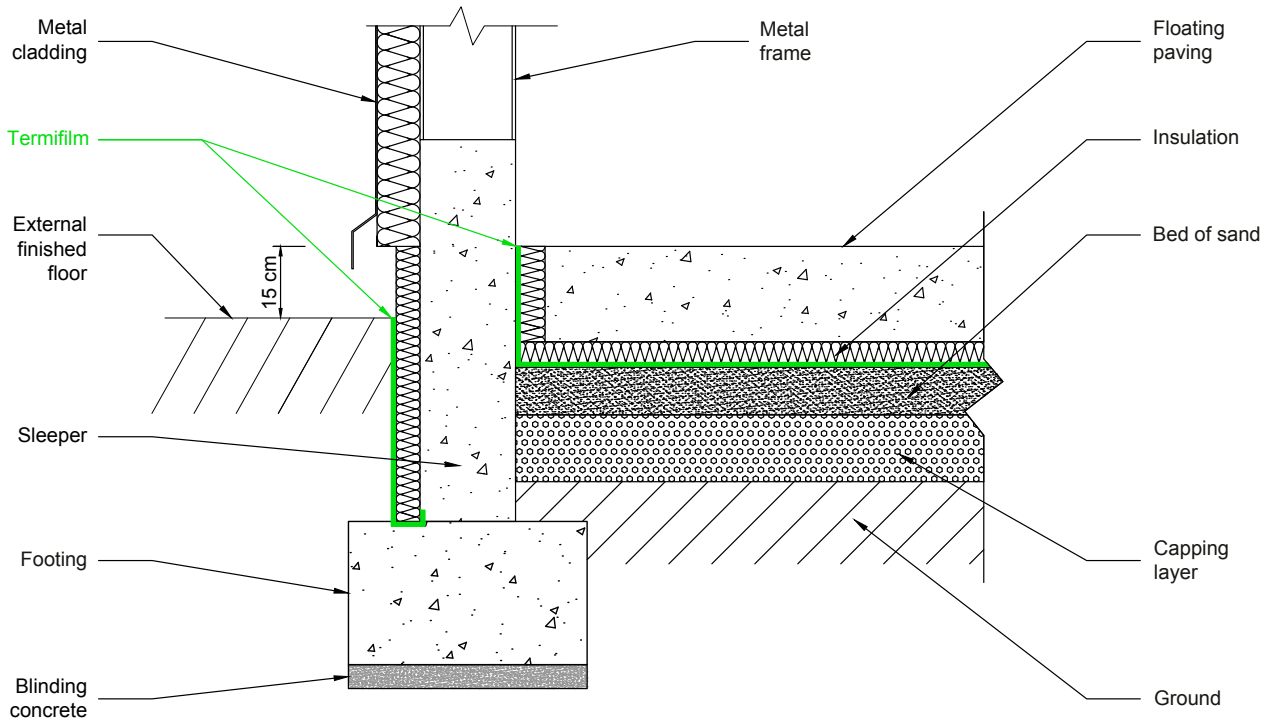


ALL ZONES | Seismic and non-seismic

This drawing is the property of Adkalis and cannot be communicated, used, or duplicated by a third party, without written consent - September 2021. Before implementation, ensure that this plan has not been modified by a more recent version that may take into account new data. \*For the legend, see page 2 of this document.

September 2021

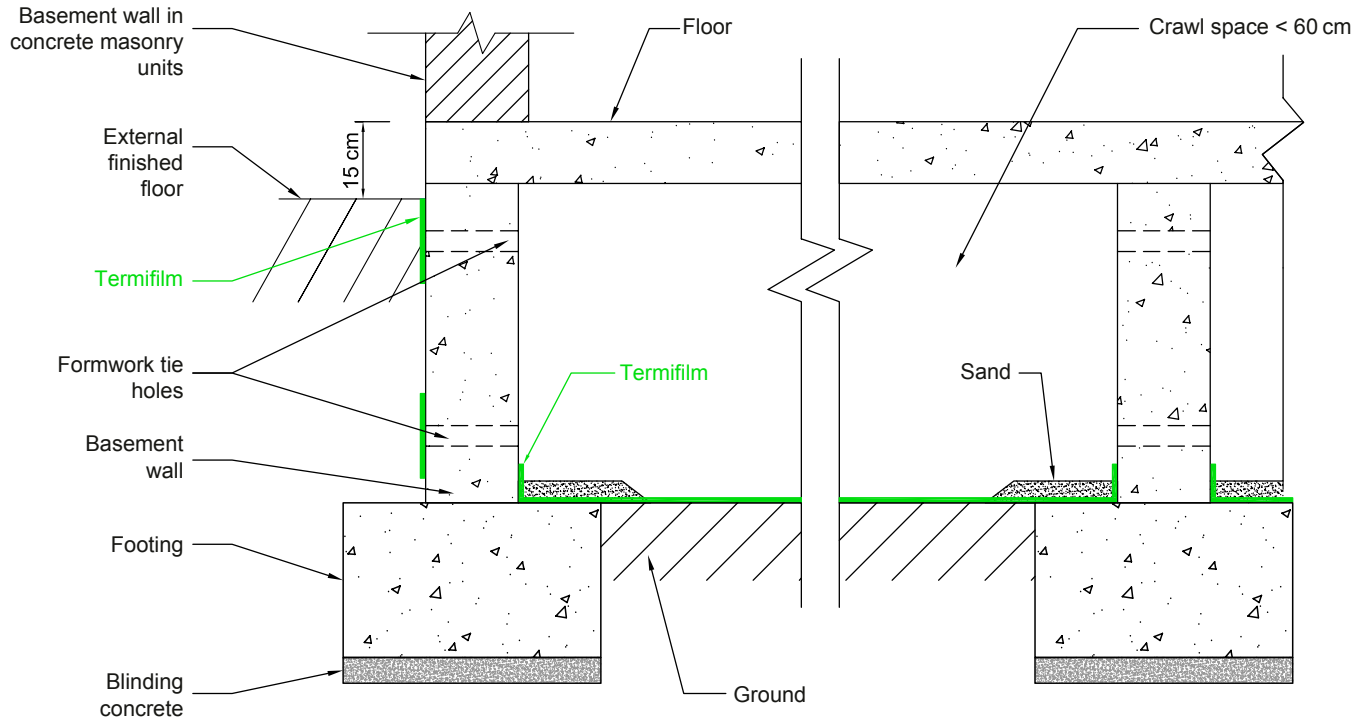
### 3.4 - Floating slab / Sleepers / External insulation / Industrial building



ALL ZONES | Seismic and non-seismic

This drawing is the property of Adkalis and cannot be communicated, used, or duplicated by a third party, without written consent - September 2021.  
Before implementation, ensure that this plan has not been modified by a more recent version that may take into account new data. \*For the legend, see page 2 of this document.

### 4.1 - Floor above crawl space < 60 cm / Cast-in-place concrete

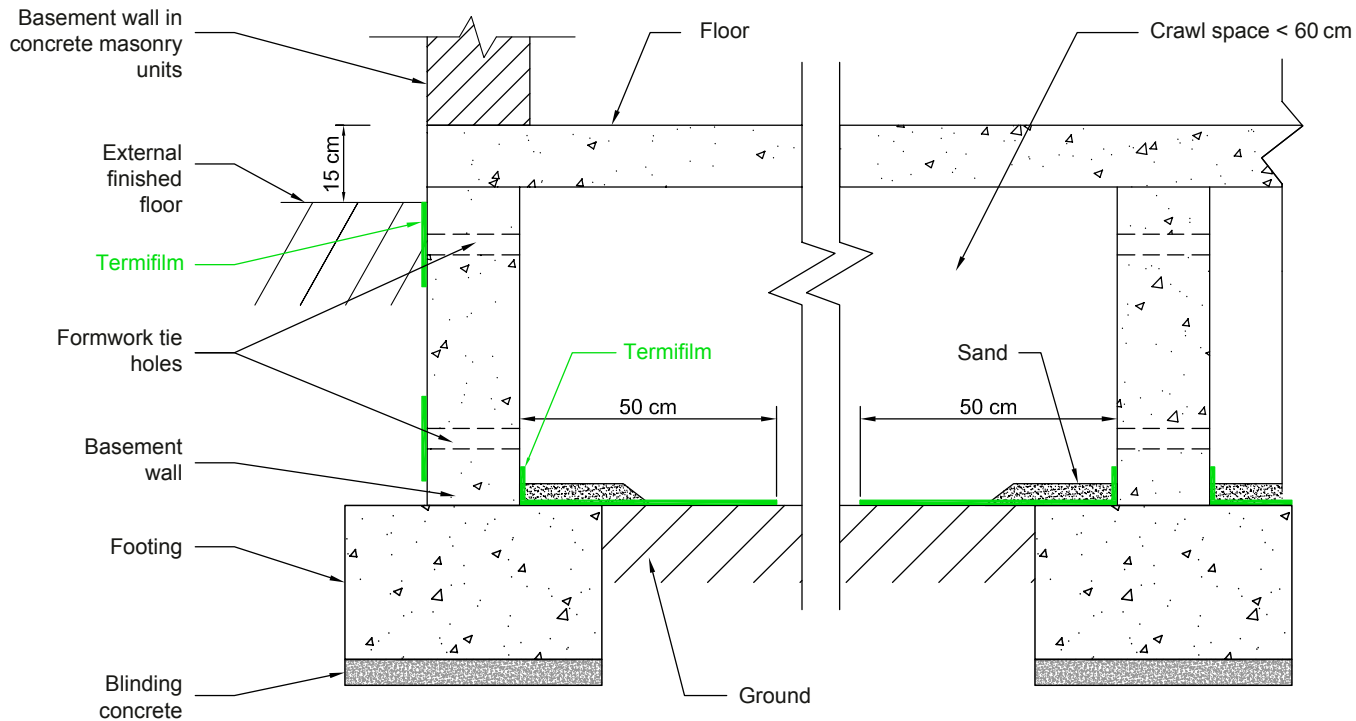


ALL ZONES | Seismic and non-seismic

This drawing is the property of Adkalis and cannot be communicated, used, or duplicated by a third party, without written consent - September 2021. Before implementation, ensure that this plan has not been modified by a more recent version that may take into account new data. \*For the legend, see page 2 of this document.

September 2021

## 4.2 - Floor above crawl space > 60 cm / Cast-in-place concrete

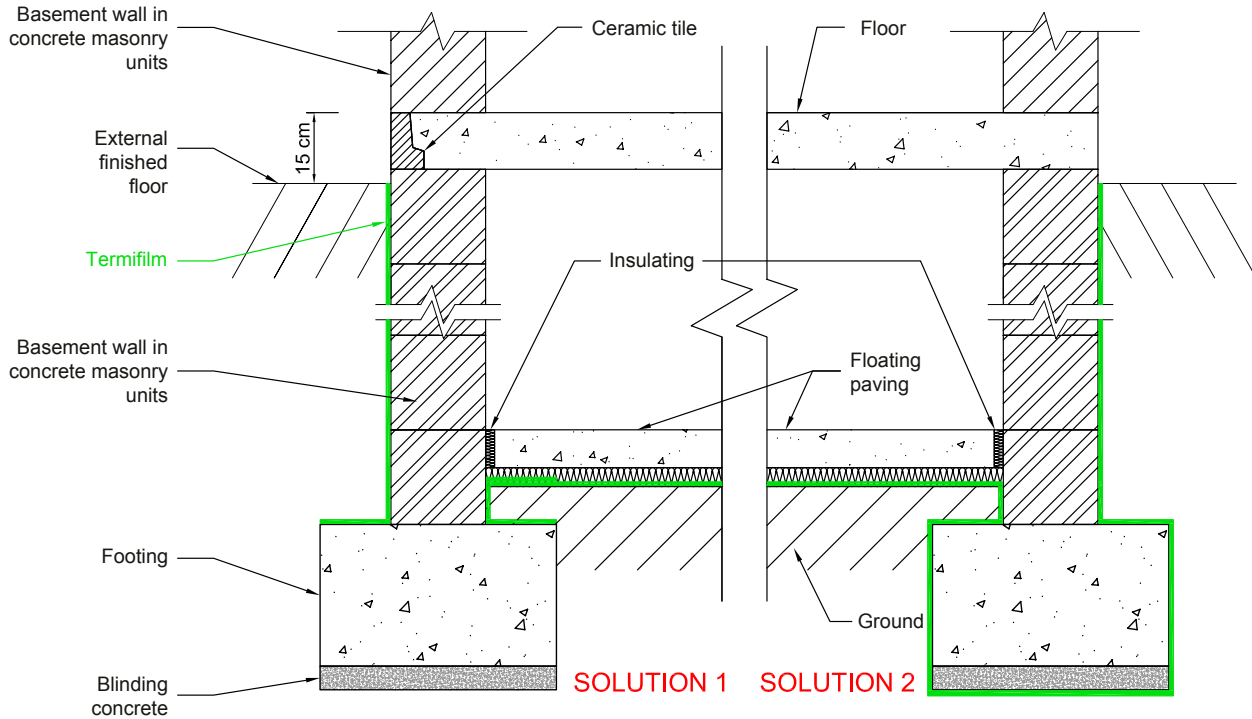


ALL ZONES | Seismic and non-seismic

September 2021

This drawing is the property of Adkalis and cannot be communicated, used, or duplicated by a third party, without written consent - September 2021.  
Before implementation, ensure that this plan has not been modified by a more recent version that may take into account new data. \*For the legend, see page 2 of this document.

## 5.1 - Floor above basement / Concrete masonry units

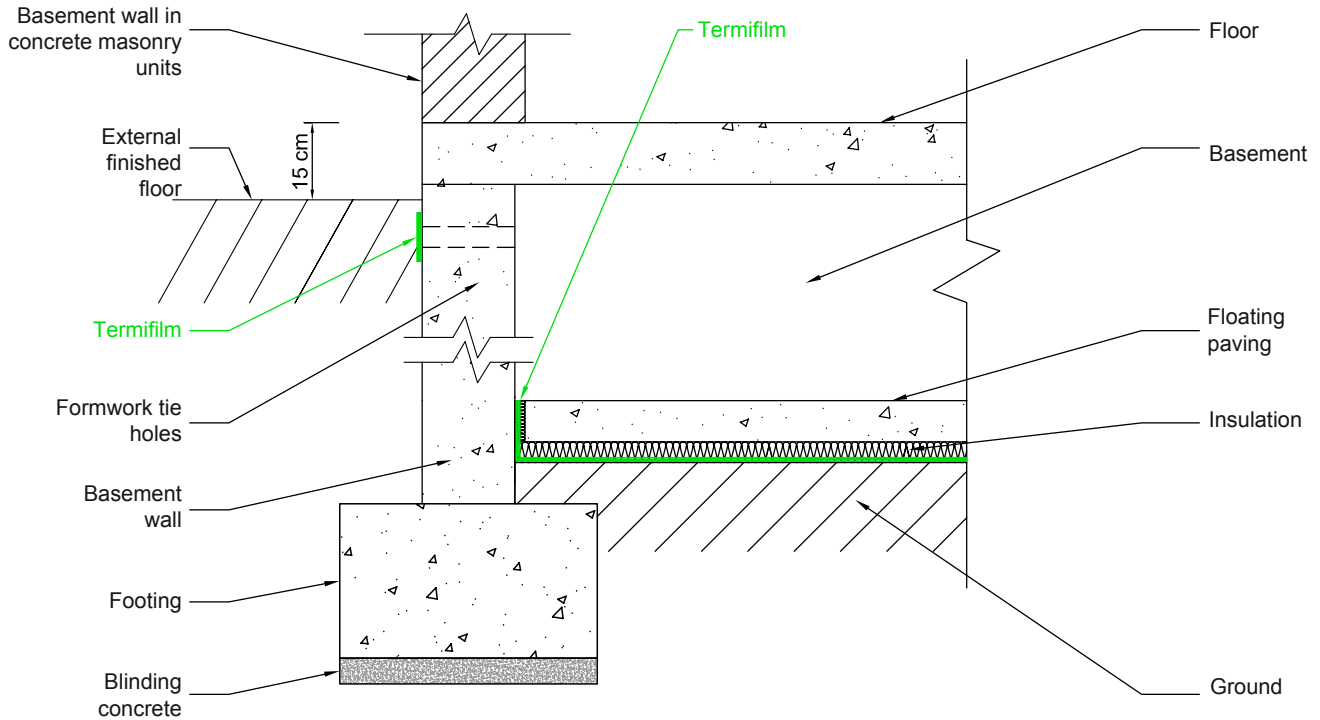


ALL ZONES | Seismic and non-seismic

This drawing is the property of Adkalis and cannot be communicated, used, or duplicated by a third party, without written consent - September 2021.  
 Before implementation, ensure that this plan has not been modified by a more recent version that may take into account new data. \*For the legend, see page 2 of this document.

September 2021

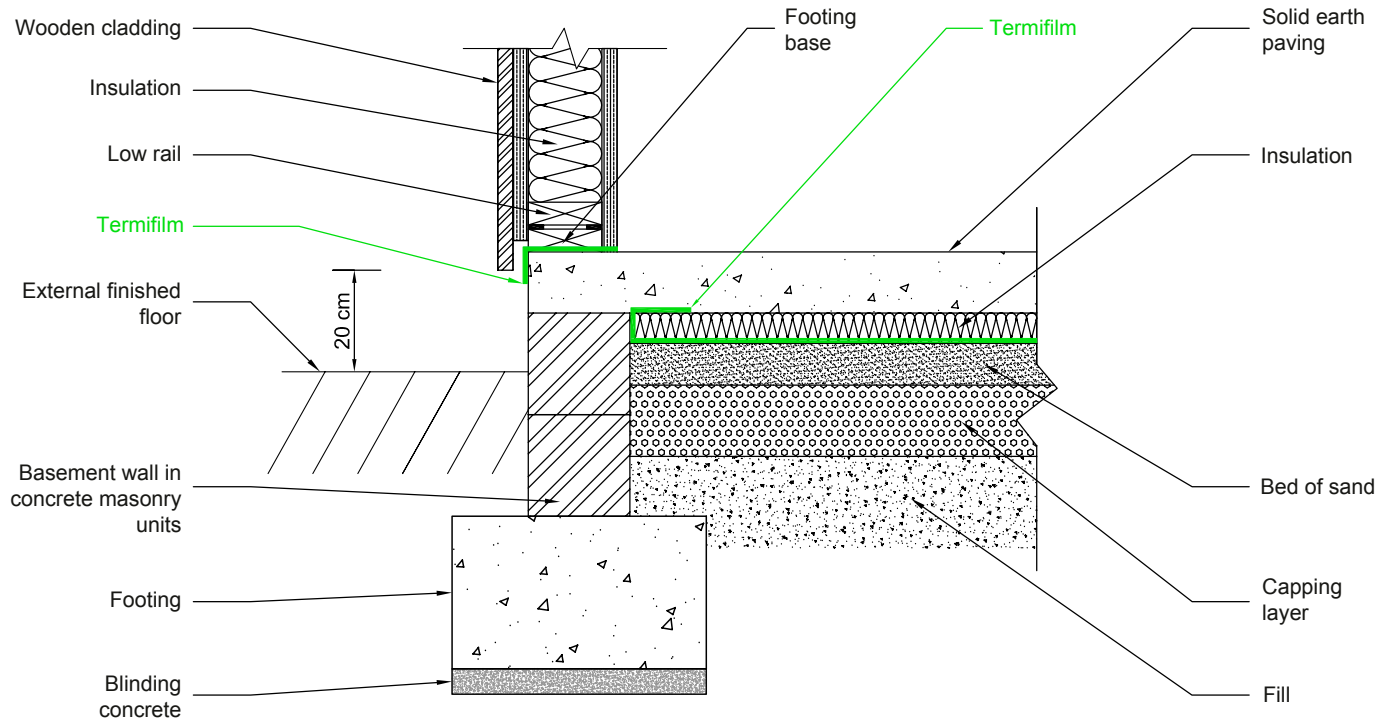
## 5.2 - Floor above basement / Cast-in-place concrete



ALL ZONES | Seismic and non-seismic

This drawing is the property of Adkalis and cannot be communicated, used, or duplicated by a third party, without written consent - September 2021.  
Before implementation, ensure that this plan has not been modified by a more recent version that may take into account new data. \*For the legend, see page 2 of this document.

## 6.1 - TFH Solid Earth Paving / Insulation under slab

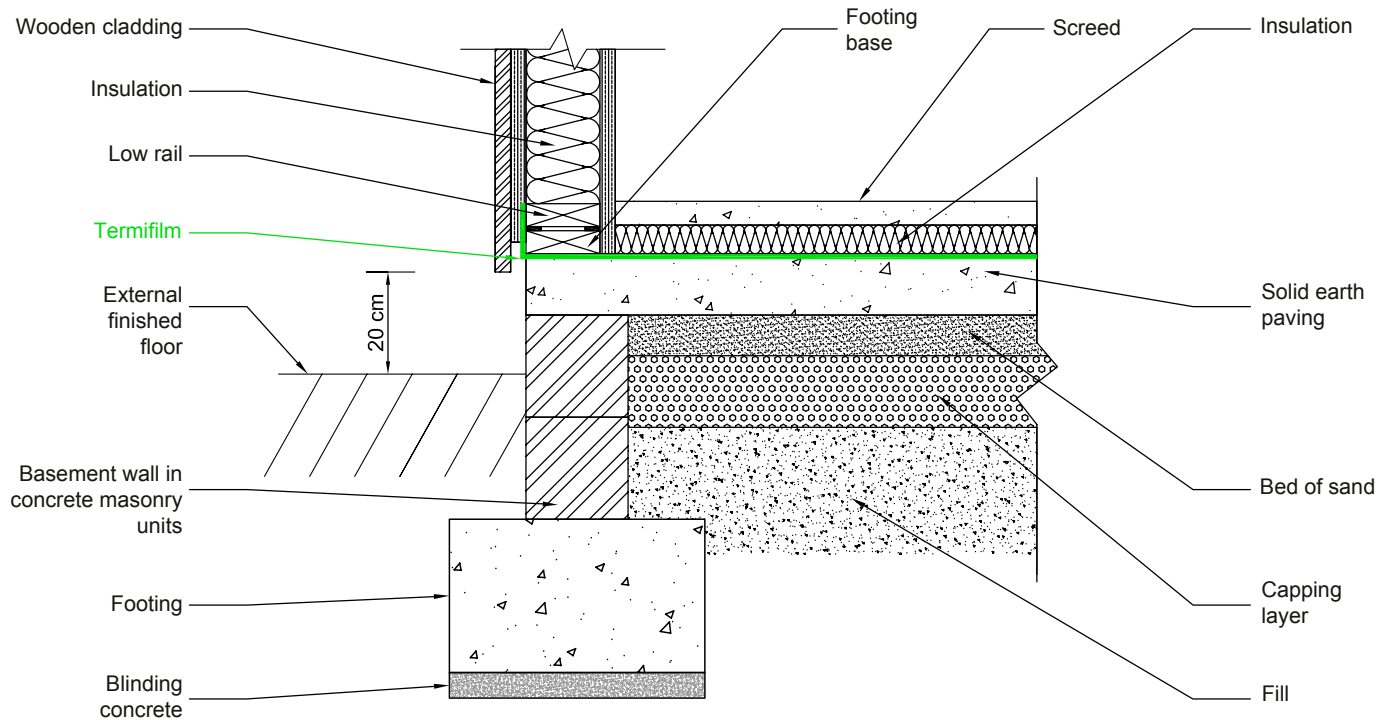


ALL ZONES | Seismic and non-seismic

This drawing is the property of Adkalis and cannot be communicated, used, or duplicated by a third party, without written consent - September 2021. Before implementation, ensure that this plan has not been modified by a more recent version that may take into account new data. \*For the legend, see page 2 of this document.

September 2021

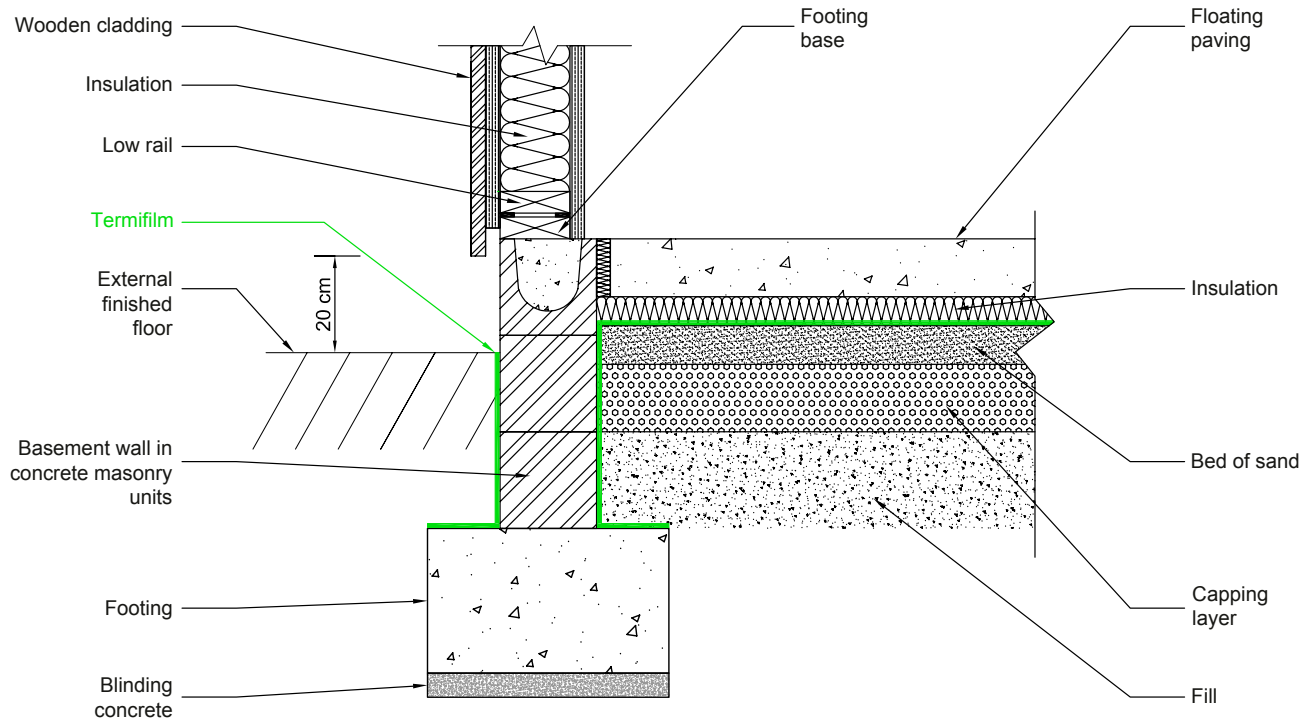
## 6.2 - TFH Solid Earth Paving / Insulation above slab



ALL ZONES | Seismic and non-seismic

This drawing is the property of Adkalis and cannot be communicated, used, or duplicated by a third party, without written consent - September 2021.  
 Before implementation, ensure that this plan has not been modified by a more recent version that may take into account new data. \*For the legend, see page 2 of this document.

### 6.3 - TFH Floating slab / Ties

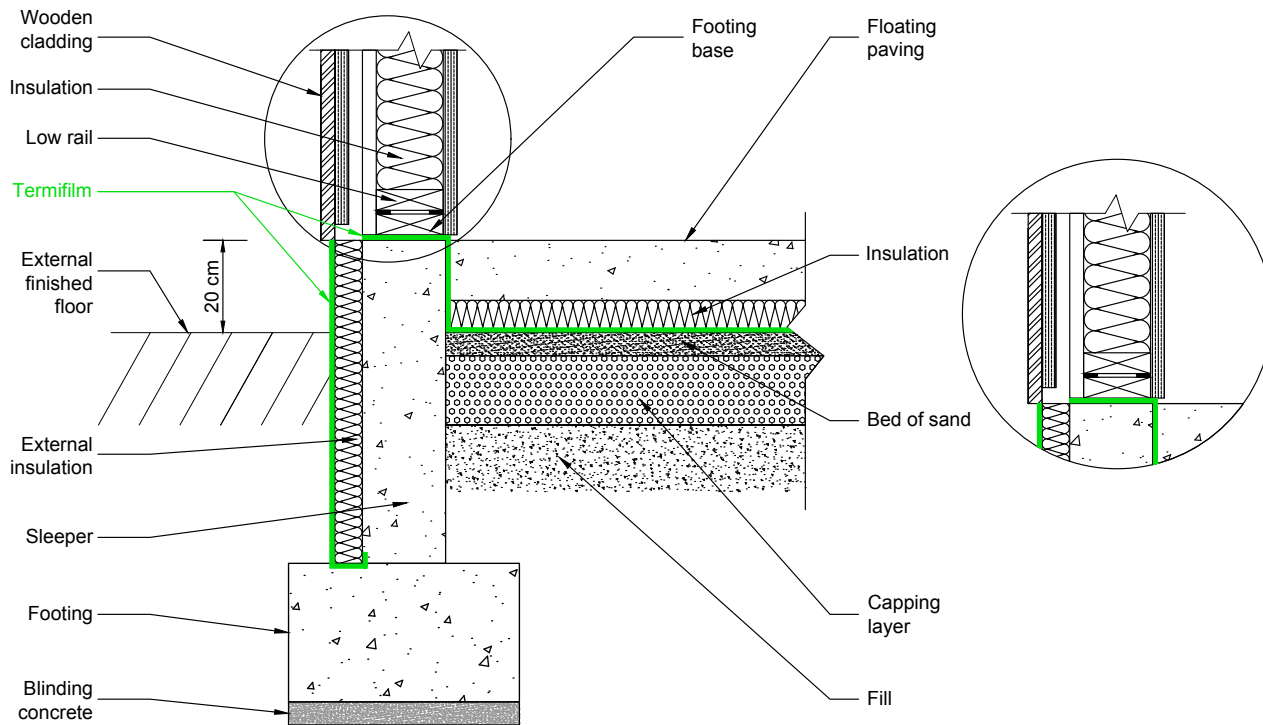


ALL ZONES | Seismic and non-seismic

This drawing is the property of Adkalis and cannot be communicated, used, or duplicated by a third party, without written consent - September 2021. Before implementation, ensure that this plan has not been modified by a more recent version that may take into account new data. \*For the legend, see page 2 of this document.

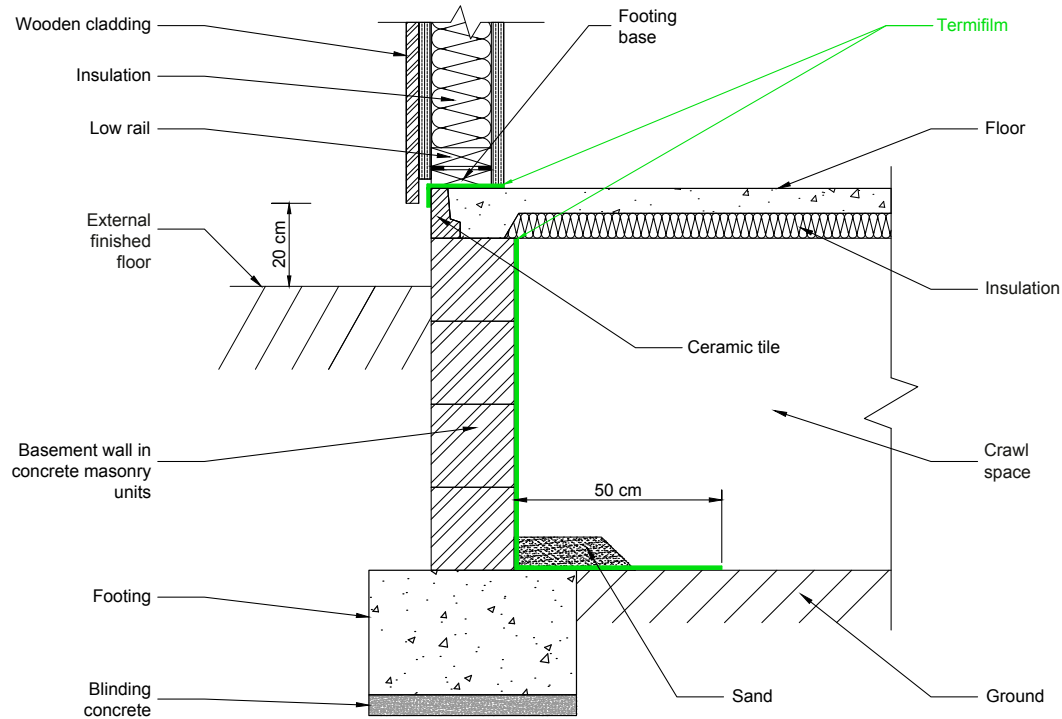
September 2021

## 6.4 - TFH Floating slab / Sleepers



ALL ZONES | Seismic and non-seismic

## 7.1 - TFH Floor above crawl space > 60 cm / Basement in masonry units

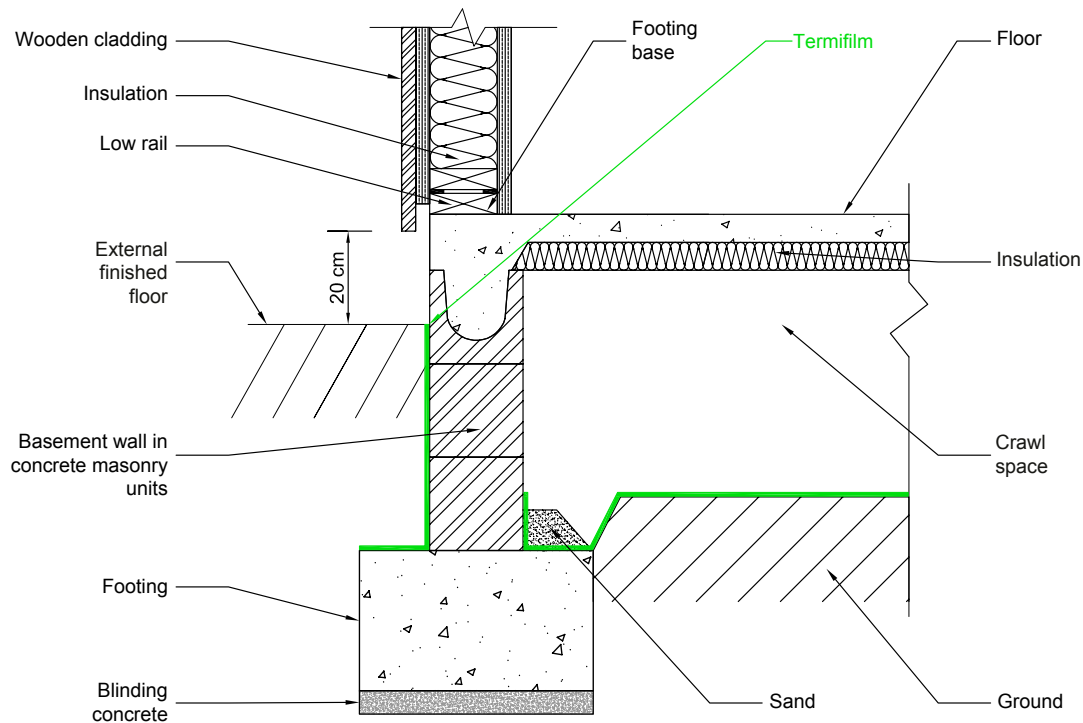


ALL ZONES | Seismic and non-seismic

This drawing is the property of Adkalis and cannot be communicated, used, or duplicated by a third party, without written consent - September 2021. Before implementation, ensure that this plan has not been modified by a more recent version that may take into account new data. \*For the legend, see page 2 of this document.

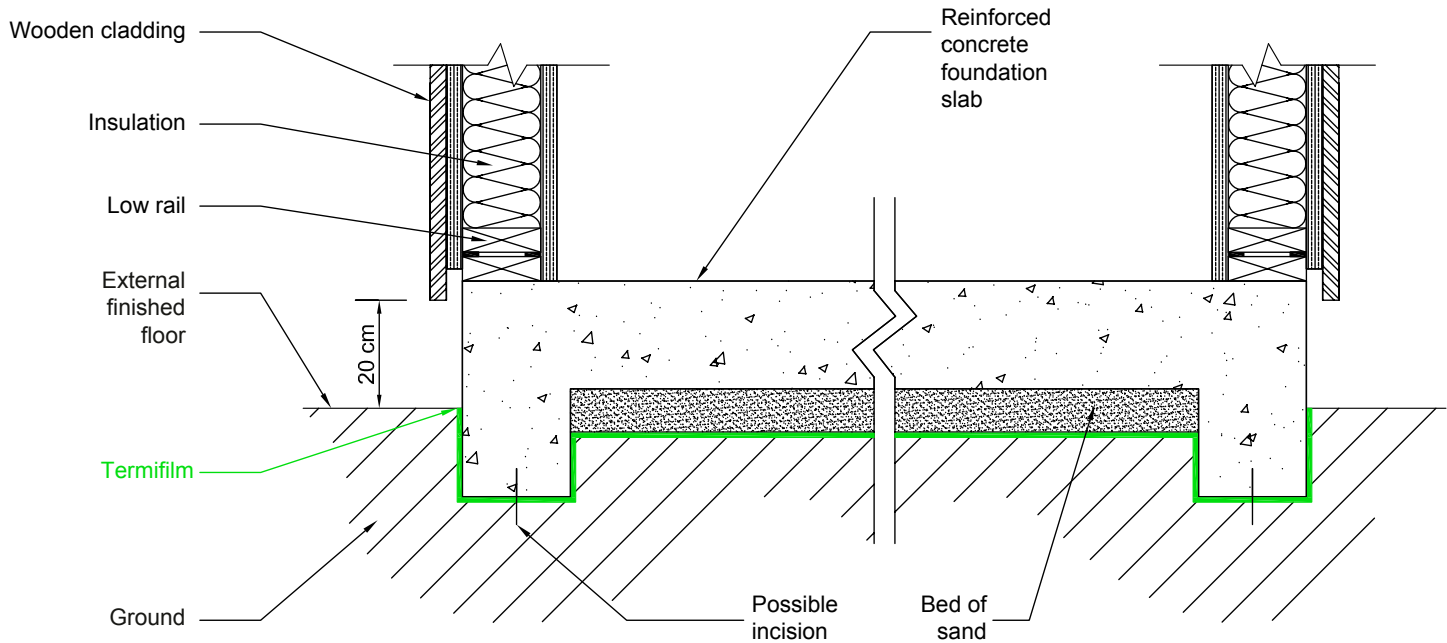
September 2021

## 7.2 - TFH Floor above crawl space < 60 cm / Basement in masonry units



ALL ZONES | Seismic and non-seismic

## 8.1 - TFH Foundation Slab

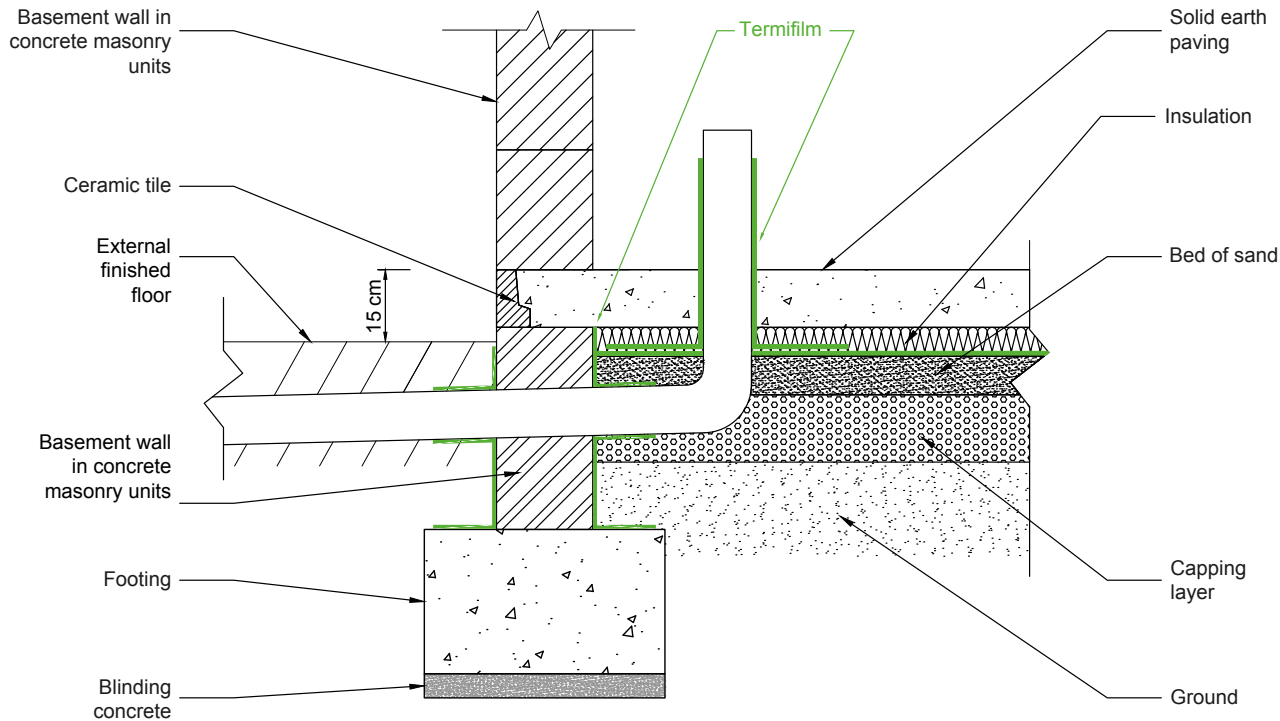


ALL ZONES | Seismic and non-seismic

This drawing is the property of Adkalis and cannot be communicated, used, or duplicated by a third party, without written consent - September 2021. Before implementation, ensure that this plan has not been modified by a more recent version that may take into account new data. \*For the legend, see page 2 of this document.

September 2021

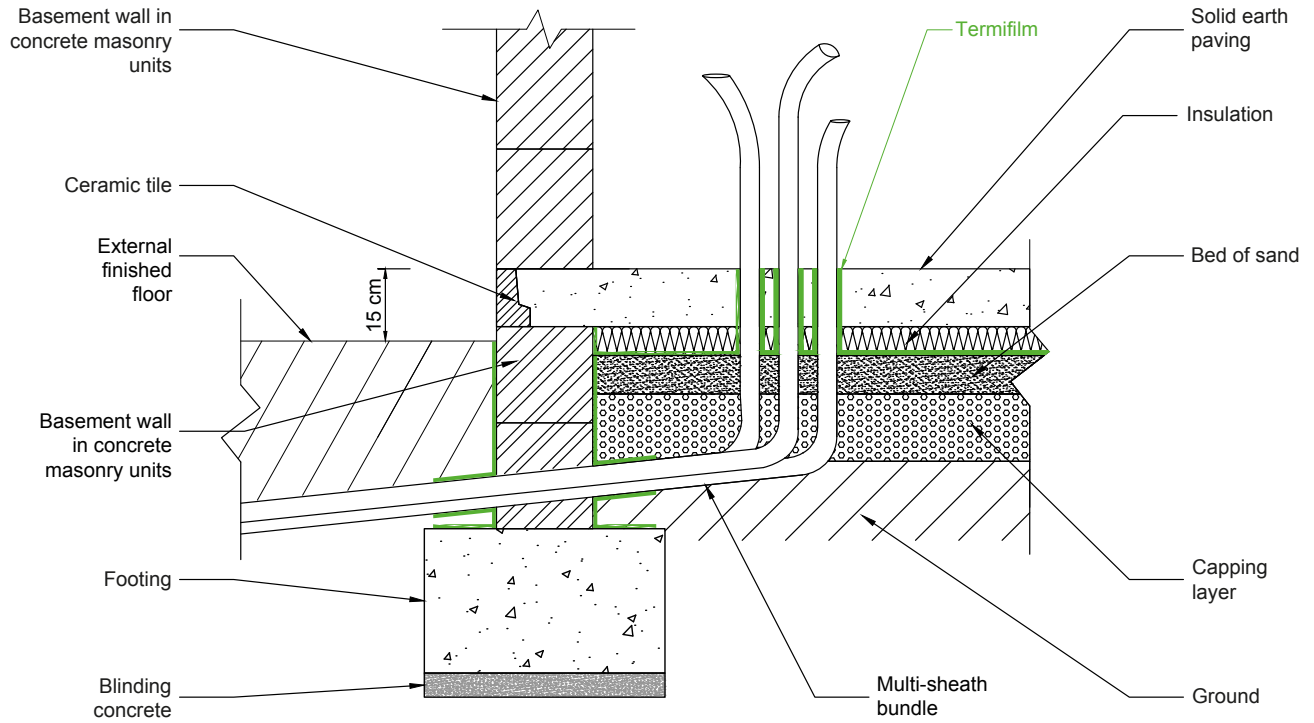
## 9.1 - Single duct / Termifilm



ALL ZONES | Seismic and non-seismic

This drawing is the property of Adkalis and cannot be communicated, used, or duplicated by a third party, without written consent - September 2021.  
 Before implementation, ensure that this plan has not been modified by a more recent version that may take into account new data. \*For the legend, see page 2 of this document.

## 9.2 - Multiple ducts / Before casting / Termifilm



ALL ZONES | Seismic and non-seismic

This drawing is the property of Adkalis and cannot be communicated, used, or duplicated by a third party, without written consent - September 2021. Before implementation, ensure that this plan has not been modified by a more recent version that may take into account new data. \*For the legend, see page 2 of this document.

September 2021



# 1, 2, 3, 4...

## Declare your building sites **TERMIFILM** to obtain the installation certificate file!

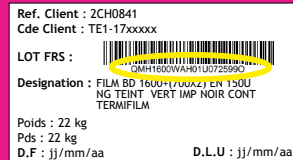
### 1 SCAN

→ Scan the QR Code below  
or go to [adkalis.com/en/brands/termifilm](http://adkalis.com/en/brands/termifilm) to access  
your personal  
site declaration  
area.



### 2 DECLARE

→ Declare your jobsite by  
filling in all the fields on the  
form on line. You will have  
taken care, beforehand, to  
note the batch number of  
the roll of applied Termifilm  
indicated on the packaging.



### 3 RECIEVE

→ Receive the Termifilm  
installation certificate once  
you have completed your  
work on the site.

### 4 TEST

→ Certify the implementation  
of the Termifilm preventive  
termite system before  
construction and obtain  
the Termifilm installation  
certificate file for the  
termite preventive system  
to be given to the project  
manager for a compliant  
building site.

**Termifilm offers you a clever and innovative Internet tool to ensure the traceability and compliance of constructions.**

It allows you to declare the construction sites using Termifilm, to follow these sites, to provide, the certificate of the application of the Termifilm system as soon as the installation is completed.



To build on  
durable bases

TERMIFILM a high-performance system  
for building work that lasts

A range of products for:

→ DEALING WITH  
ANTI-TERMITES BEFORE CONSTRUCTION

### Trusting TERMIFILM means building :

- while ensuring the proper resistance of the building through the choice of reliable, good quality, and certified products,
- with free technical support to optimise all your projects.



adkalis®

adkalis.com

Subsidiary of  
b groupe  
berkem

### For more information

Visit the [adkalis.com/en/brands/termifilm](http://adkalis.com/en/brands/termifilm) website or click the flash codes below to see the videos showing the installation of the TERMIFILM range of products:

Installation of  
TERMIFILM



→ Declare your building site and obtain  
your certificate, *it's easy!*



Find out more  
[adkalis.com/en/  
brands/termifilm](http://adkalis.com/en/brands/termifilm)

DISTRIBUTED BY:

ecovar  
The Leading Supplier of Pest  
Management Solutions

Mob: +971.50.378.3389  
Tel: +971.4.366.3302 ext. 604  
Fax: +971.4.554.5827

[www.ecovargroup.com](http://www.ecovargroup.com)

Bay Square, Bldg 1-104  
Business Bay, Dubai, UAE